



HORSENS U19

Coach :

12/10/2016
U19 DIVISION 2016/2017

1 - 1



NÆSBY U19

Coach :



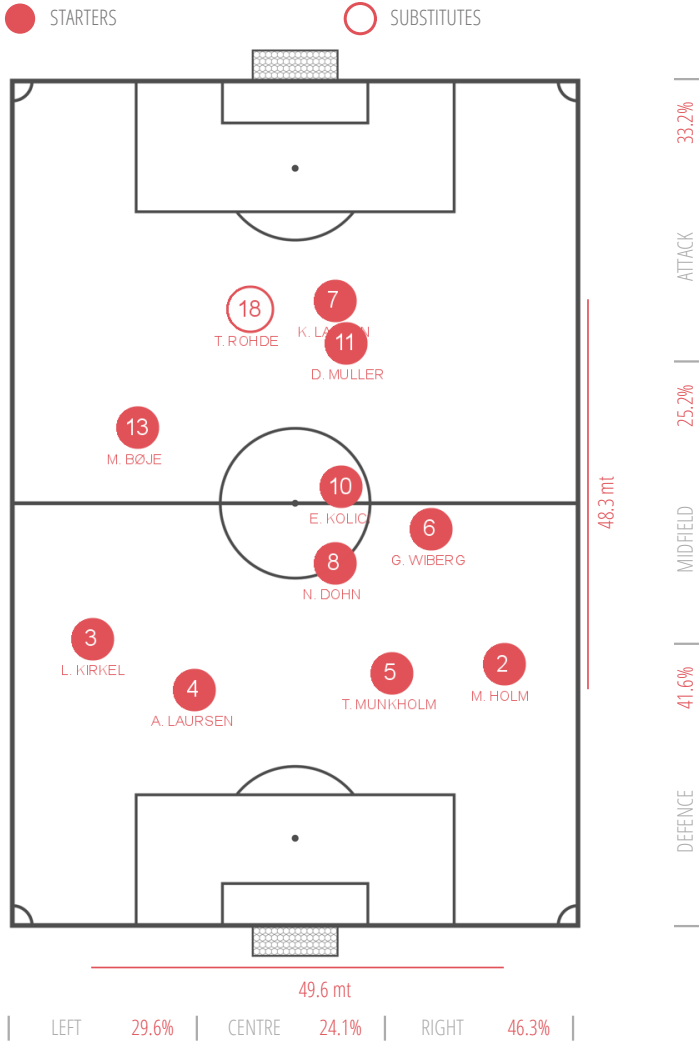
| | | | | | | | | | | |
|----|-----|-------------------|-----|---|-----|----|-----|-------------------------|-----|---|
| 1 | GKP | M. Bobjerg ('98) | | | | 1 | GKP | J. Gadkjær ('99) | | |
| 13 | DEF | M. Bøje ('99) | | | | 13 | DEF | R. Espersen ('99) | | |
| 3 | DEF | L. Kirkel ('98) | | | | 5 | DEF | J. Hansen ('98) | 73' | ← |
| 2 | DEF | M. Holm ('98) | | | | 4 | DEF | M. Damsbo ('98) | | |
| 5 | DEF | T. Munkholm ('99) | | | | 2 | DEF | K. Lehm ('98) | 75' | ← |
| 4 | DEF | A. Laursen ('98) | | | | 9 | MID | M. Dongsted ('99) | 32' | ■ |
| 10 | MID | E. Kolici ('99) | | | | 10 | MID | M. De Claville Bertelse | | |
| 7 | MID | K. Larsen ('98) | 87' | ← | | 7 | MID | T. Larsen ('98) | | |
| 6 | MID | G. Wiberg ('98) | 55' | ■ | 83' | 11 | MID | O. Nielsen ('99) | | |
| 8 | MID | N. Dohn ('98) | | | 29' | 8 | MID | K. Petersen ('99) | | |
| 11 | FWD | D. Muller ('98) | | | | 6 | FWD | R. Thomsen ('98) | 64' | ← |

SUBSTITUTES

| | | | | | | | | | | |
|----|-----|----------------|-----|---|--|----|-----|------------------------|-----|---|
| 18 | FWD | T. Rohde ('99) | 87' | → | | 12 | DEF | E. Kingo Eriksen ('98) | 73' | → |
| | | | | | | 16 | MID | N. Risager ('99) | 75' | → |
| | | | | | | 3 | MID | E. Olsen ('99) | 64' | → |

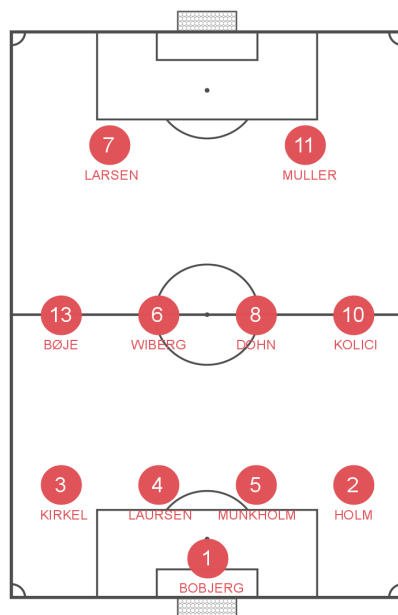
HORSENS U19

AVERAGE POSITIONS



PLAYERS

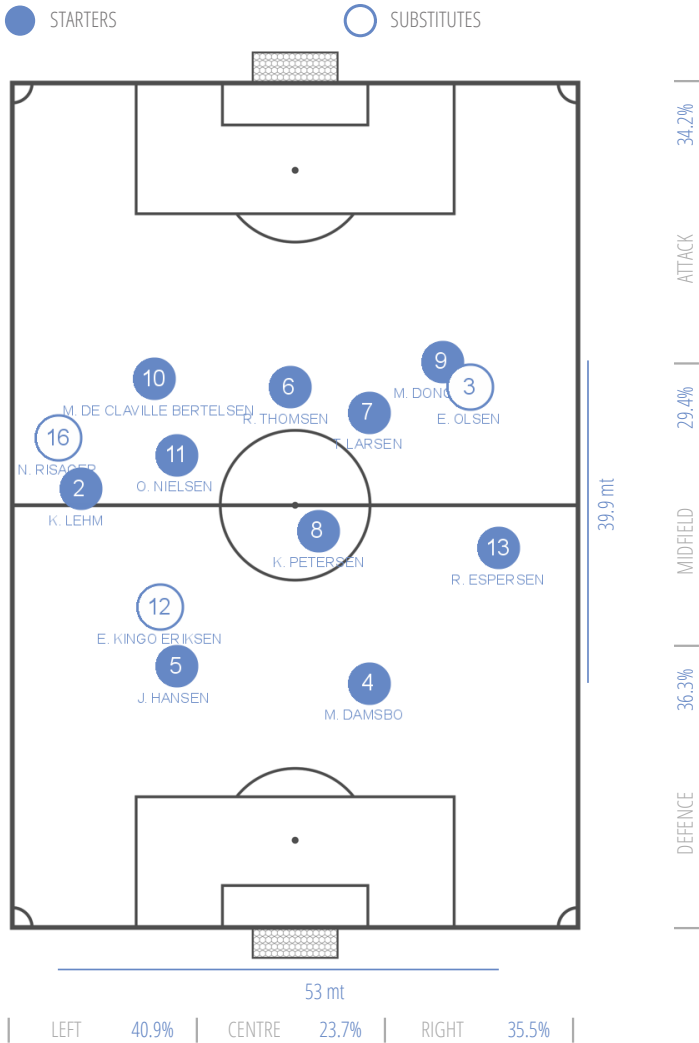
| | | |
|----|-----|-------------|
| 13 | DEF | M. Bøje |
| 3 | DEF | L. Kirkel |
| 2 | DEF | M. Holm |
| 5 | DEF | T. Munkholm |
| 4 | DEF | A. Laursen |
| 10 | MID | E. Kolici |
| 7 | MID | K. Larsen |
| 6 | MID | G. Wiberg |
| 8 | MID | N. Dohn |
| 11 | FWD | D. Muller |
| 18 | FWD | T. Rohde |



4-4-2
Used from 0' >> 92'

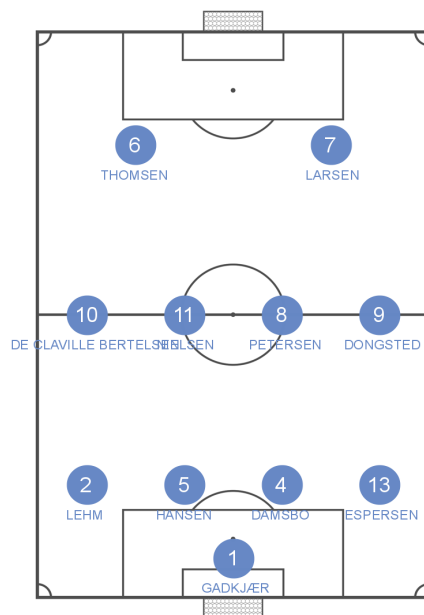
NÆSBY U19

AVERAGE POSITIONS



PLAYERS

| | | |
|----|-----|--------------------------|
| 13 | DEF | R. Espersen |
| 5 | DEF | J. Hansen |
| 4 | DEF | M. Damsbo |
| 2 | DEF | K. Lehm |
| 9 | MID | M. Dongsted |
| 10 | MID | M. De Claville Bertelsen |
| 7 | MID | T. Larsen |
| 11 | MID | O. Nielsen |
| 8 | MID | K. Petersen |
| 6 | FWD | R. Thomsen |
| 12 | DEF | E. Kingo Eriksen |
| 16 | MID | N. Risager |
| 3 | MID | E. Olsen |



4-4-2
Used from 0' >> 92'



HORSENS U19



NÆSBY U19

| | 1 HALF | 2 HALF | TOTAL | 1 HALF | 2 HALF | TOTAL |
|------------------|---------|---------|---------|---------|---------|----------|
| GENERALS | | | | | | |
| BALL POSSESSION | 13 min | 15 min | 28 min | 23 min | 23 min | 46 min |
| AVERAGE POSITION | 48.1 mt | 50.9 mt | 49.5 mt | 49.7 mt | 55.8 mt | 52.75 mt |
| CORNERS | 0 | 2 | 2 | 3 | 2 | 5 |
| FREE KICK CROSS | 1 | 2 | 3 | 2 | 1 | 3 |
| FREE KICK SHOT | 0 | 0 | 0 | 0 | 0 | 0 |
| FOULS | 7 | 4 | 11 | 7 | 4 | 11 |
| OFFSIDES | 4 | 2 | 6 | 0 | 1 | 1 |

| | | | | | | |
|------------------------------------|-------------|-------------|-------------|-------------|-------------|-------------|
| CONSTRUCTION | | | | | | |
| PASSES (% ACCURATE) | 126 (73.8%) | 129 (66.7%) | 255 (70.2%) | 272 (85.3%) | 234 (78.2%) | 506 (82%) |
| - Final Third Entries (% Accurate) | 20 (70%) | 53 (66%) | 73 (67.1%) | 71 (73.2%) | 89 (68.5%) | 160 (70.6%) |
| - Other (% Accurate) | 106 (74.5%) | 76 (67.1%) | 182 (71.4%) | 201 (89.6%) | 145 (84.1%) | 346 (87.3%) |
| LONG PASSES (% ACCURATE) | 23 (60.9%) | 21 (52.4%) | 44 (56.8%) | 15 (33.3%) | 20 (60%) | 35 (48.6%) |
| THROUGH PASSES (% ACCURATE) | 3 (33.3%) | 1 (0%) | 4 (25%) | 3 (0%) | 2 (0%) | 5 (0%) |
| COUNTERATTACKS | 0 | 0 | 0 | 0 | 0 | 0 |
| ACTIONS STARTED BY GOALKEEPER | 20 | 15 | 35 | 7 | 11 | 18 |
| - Long pass | 14 | 12 | 26 | 1 | 0 | 1 |
| - LOW | 6 | 3 | 9 | 6 | 11 | 17 |
| -- % Right | 83.3% | 0% | 55.6% | 33.3% | 36.4% | 35.3% |
| -- % Left | 16.7% | 33.3% | 22.2% | 16.7% | 36.4% | 29.4% |
| -- % Center | 0% | 33.3% | 11.1% | 50% | 9.1% | 23.5% |
| -- % Failed | 0% | 33.3% | 11.1% | 0% | 18.2% | 11.8% |



HORSENS U19



NÆSBY U19

| | 1 HALF | 2 HALF | TOTAL | 1 HALF | 2 HALF | TOTAL |
|-------------------------------------|---------|-----------|-----------|--------|----------|----------|
| ATTACKING PLAY | | | | | | |
| OPPORTUNITY (% SUCCESSFUL) | 2 (50%) | 5 (0%) | 7 (14.3%) | 2 (0%) | 6 (0%) | 8 (0%) |
| SHOTS | 2 | 6 | 8 | 3 | 6 | 9 |
| Shot from outside of penalty area | 0 | 3 | 3 | 1 | 2 | 3 |
| Shot from inside of penalty area | 2 | 3 | 5 | 2 | 4 | 6 |
| ACTIONS FINALIZATION | 7 | 14 | 21 | 3 | 7 | 10 |
| - Shot from outside of penalty area | 0 | 3 | 3 | 1 | 2 | 3 |
| - CROSSES | 0 | 3 | 3 | 0 | 1 | 1 |
| -- From left (%) | 0 | 2 (66.7%) | 2 (66.7%) | 0 | 1 (100%) | 1 (100%) |
| -- From right (%) | 0 | 1 (33.3%) | 1 (33.3%) | 0 | 0 | 0 (0%) |
| - Build-Up play | 4 | 8 | 12 | 2 | 4 | 6 |
| - Long ball | 3 | 0 | 3 | 0 | 0 | 0 |
| DEFENSIVE | | | | | | |
| SAVES | 1 | 1 | 2 | 0 | 1 | 1 |
| CLEARANCES | 8 | 6 | 14 | 1 | 6 | 7 |
| - Low | 0 | 0 | 0 | 0 | 0 | 0 |
| - High | 8 | 6 | 14 | 1 | 6 | 7 |
| BALL RECOVERY | 43 | 45 | 88 | 33 | 39 | 72 |
| - End action | 14 | 11 | 25 | 9 | 14 | 23 |
| - Real recovery | 15 | 16 | 31 | 9 | 14 | 23 |
| - Temporary recovery | 14 | 18 | 32 | 15 | 11 | 26 |
| FINAL THIRD ENTRIES | 30 | 33 | 63 | 28 | 43 | 71 |
| FOULS NEAR THE BOX | 0 | 0 | 0 | 1 | 0 | 1 |

TERRITORIAL COVERAGE



HORSENS U19

NÆSBY U19



FIRST HALF

SECOND HALF

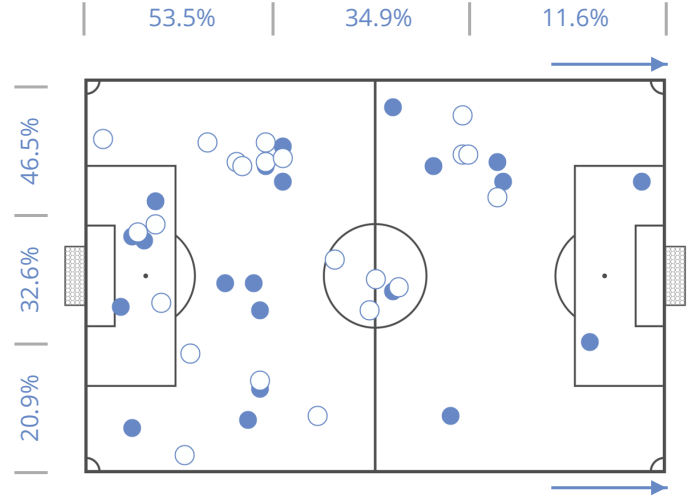
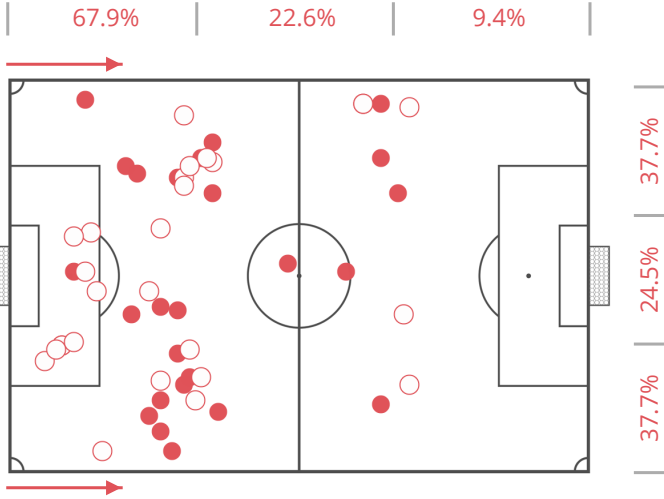
FIRST HALF

SECOND HALF

53

BALL POSSESSION RECOVERY

43



BEST PLAYERS

| | | | |
|-------------------|---|------------------|---|
| M. Bøje (90') | 9 | D. Muller (90') | 1 |
| M. Holm (90') | 8 | K. Larsen (87') | 2 |
| T. Munkholm (90') | 8 | L. Kirkel (90') | 3 |
| G. Wiberg (90') | 7 | A. Laursen (90') | 4 |
| N. Dohn (90') | 7 | E. Kolici (90') | 4 |

WORST PLAYERS

BEST PLAYERS

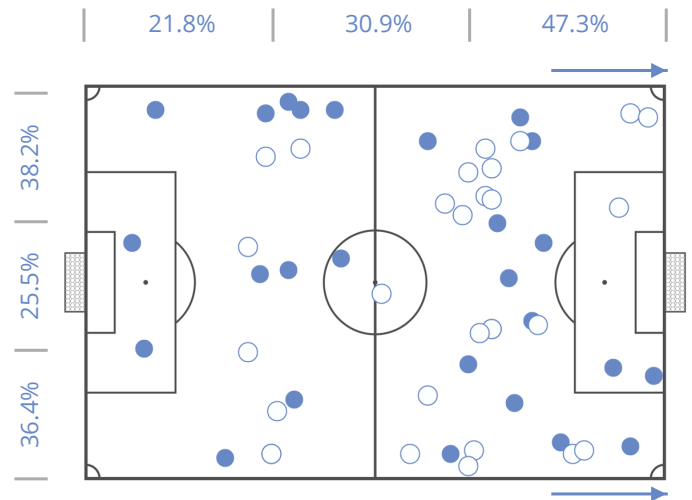
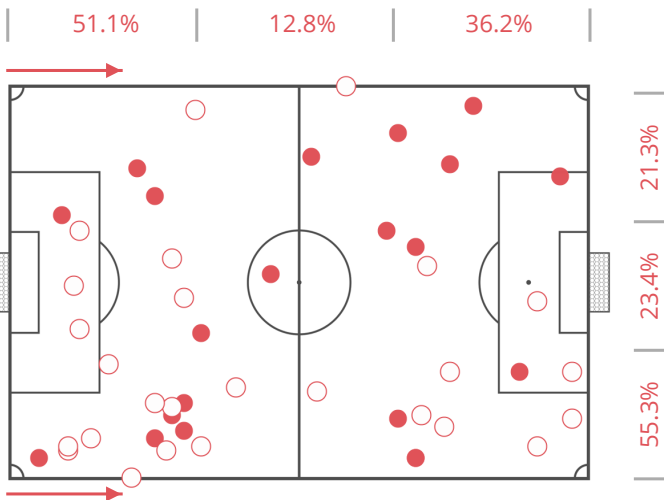
| | | | |
|-------------------|----|--------------------------------|---|
| M. Damsbo (90') | 15 | T. Larsen (90') | 1 |
| K. Lehm (75') | 8 | N. Risager (15') | 1 |
| K. Petersen (90') | 4 | M. De Claville Bertelsen (90') | 2 |
| R. Espersen (90') | 4 | E. Kingo Eriksen (17') | 2 |
| O. Nielsen (90') | 3 | O. Nielsen (90') | 3 |

WORST PLAYERS

47

BALL POSSESSION LOSS

55



BEST PLAYERS

| | | | |
|-------------------|---|-----------------|----|
| N. Dohn (90') | 1 | M. Holm (90') | 15 |
| T. Munkholm (90') | 2 | G. Wiberg (90') | 6 |
| A. Laursen (90') | 3 | D. Muller (90') | 5 |
| L. Kirkel (90') | 3 | E. Kolici (90') | 4 |
| E. Kolici (90') | 4 | M. Bøje (90') | 4 |

WORST PLAYERS

BEST PLAYERS

| | | | |
|------------------------|---|--------------------------------|---|
| J. Hansen (73') | 1 | R. Espersen (90') | 9 |
| E. Olsen (26') | 1 | K. Petersen (90') | 7 |
| E. Kingo Eriksen (17') | 2 | M. De Claville Bertelsen (90') | 7 |
| M. Damsbo (90') | 3 | O. Nielsen (90') | 7 |
| T. Larsen (90') | 3 | K. Lehm (75') | 6 |

WORST PLAYERS

TERRITORIAL COVERAGE



HORSENS U19

NÆSBY U19



● FIRST HALF

○ SECOND HALF

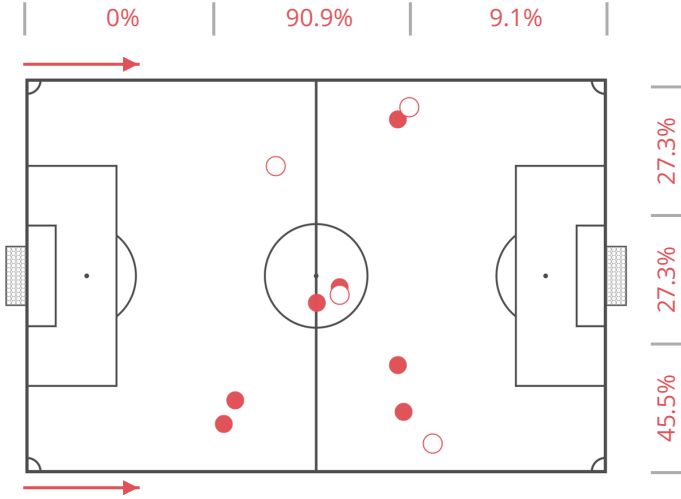
● FIRST HALF

○ SECOND HALF

11

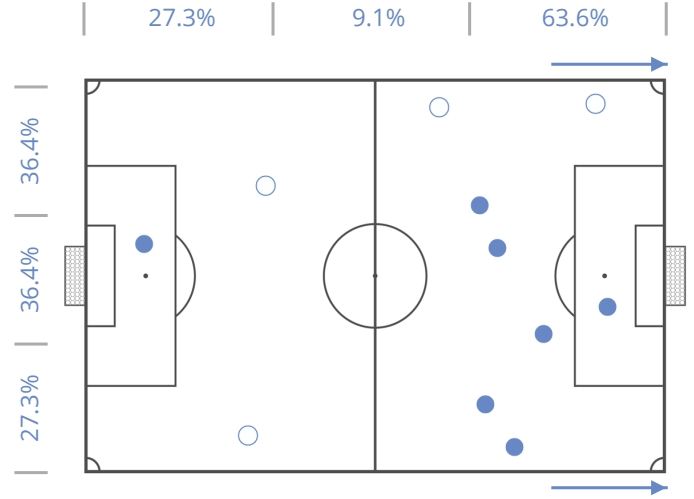
FOULS COMMITTED

11



WORST PLAYERS

| | |
|------------------|---|
| D. Muller (90') | 4 |
| N. Dohn (90') | 2 |
| A. Laursen (90') | 1 |
| G. Wiberg (90') | 1 |
| M. Bøje (90') | 1 |



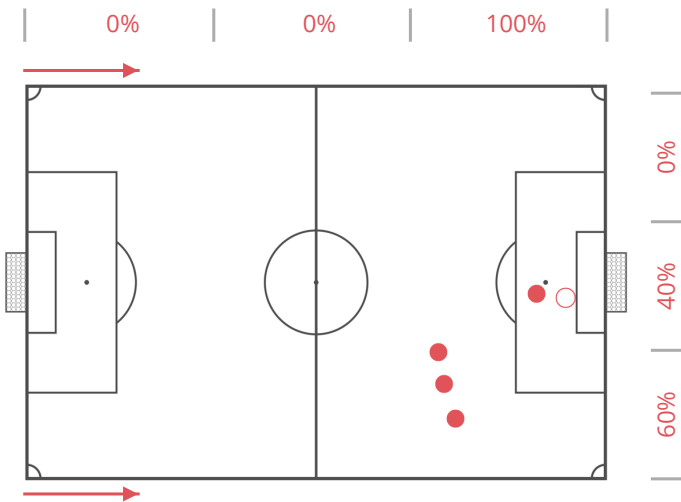
WORST PLAYERS

| | |
|-------------------|---|
| M. Dongsted (90') | 3 |
| O. Nielsen (90') | 2 |
| R. Thomsen (64') | 2 |
| K. Petersen (90') | 1 |
| M. Damsbo (90') | 1 |

5

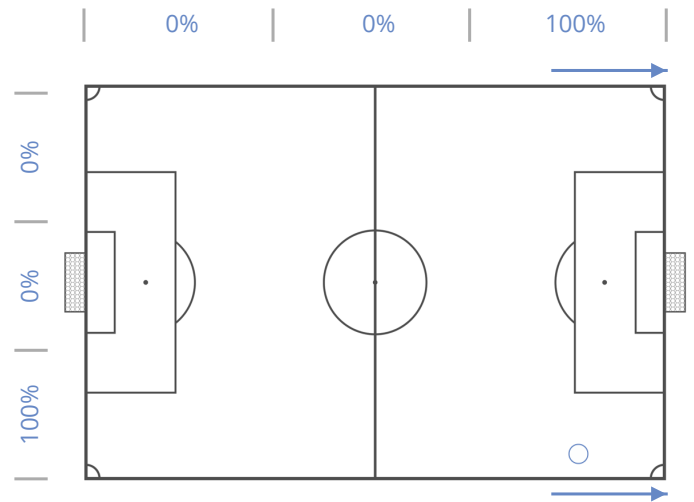
OFFSIDES

1



WORST PLAYERS

| | |
|-------------------|---|
| D. Muller (90') | 2 |
| G. Wiberg (90') | 1 |
| T. Munkholm (90') | 1 |
| K. Larsen (87') | 1 |



WORST PLAYERS

| | |
|----------------|---|
| E. Olsen (26') | 1 |
|----------------|---|

TERRITORIAL COVERAGE



HORSENS U19

NÆSBY U19



● FIRST HALF

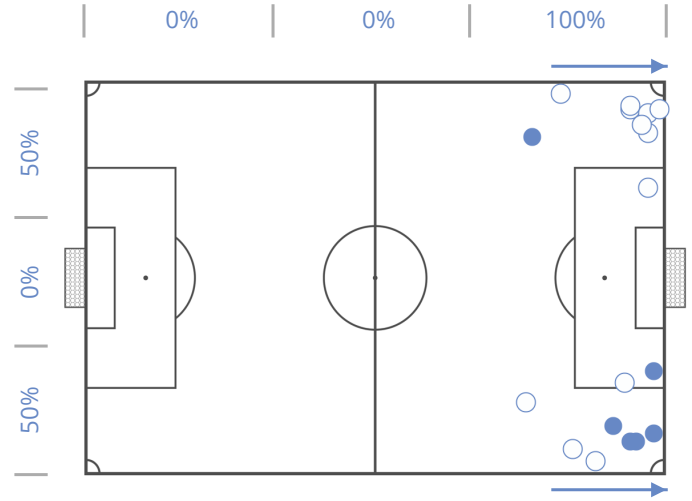
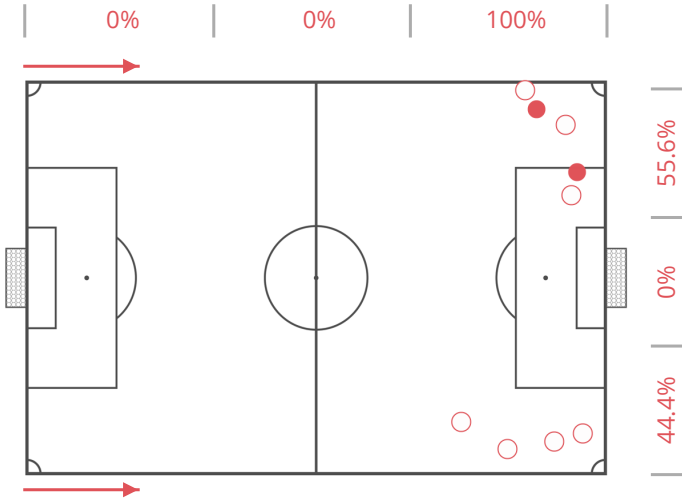
○ SECOND HALF

● FIRST HALF

○ SECOND HALF

9 CROSSES

18



BEST PLAYERS

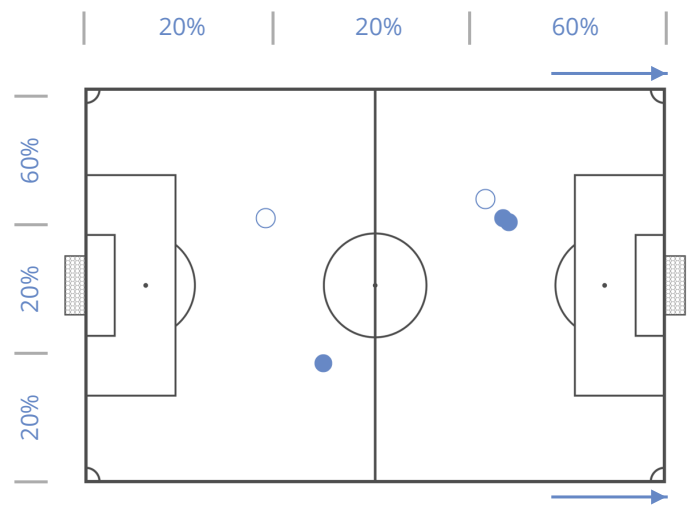
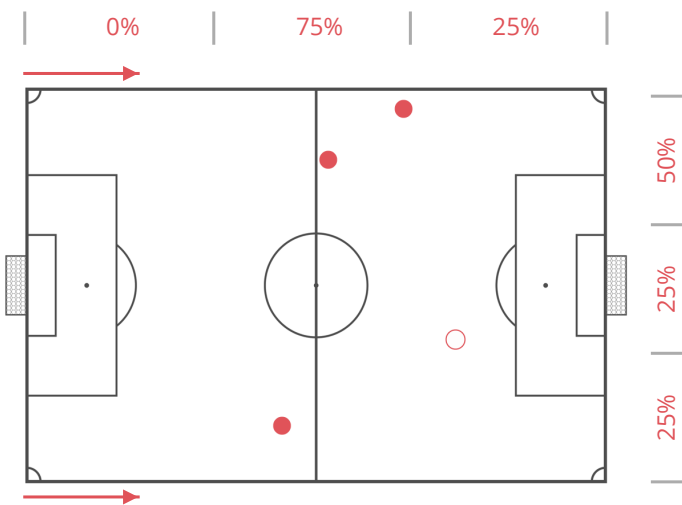
| | |
|-----------------|---|
| M. Bøje (90') | 5 |
| M. Holm (90') | 2 |
| E. Kolic (90') | 1 |
| K. Larsen (87') | 1 |

BEST PLAYERS

| | |
|--------------------------------|---|
| M. Dongsted (90') | 3 |
| T. Larsen (90') | 3 |
| K. Lehm (75') | 3 |
| N. Risager (15') | 3 |
| M. De Claville Bertelsen (90') | 2 |

4 THROUGH PASSES

5



BEST PLAYERS

| | |
|-----------------|---|
| L. Kirkel (90') | 2 |
| E. Kolic (90') | 1 |
| G. Wiberg (90') | 1 |

BEST PLAYERS

| | |
|--------------------------------|---|
| M. De Claville Bertelsen (90') | 1 |
| T. Larsen (90') | 1 |
| K. Lehm (75') | 1 |
| J. Hansen (73') | 1 |
| R. Thomsen (64') | 1 |

DUELS

● FIRST HALF

○ SECOND HALF



HORSENS U19

NÆSBY U19



● WON

● NEUT.

● LOST

● WON

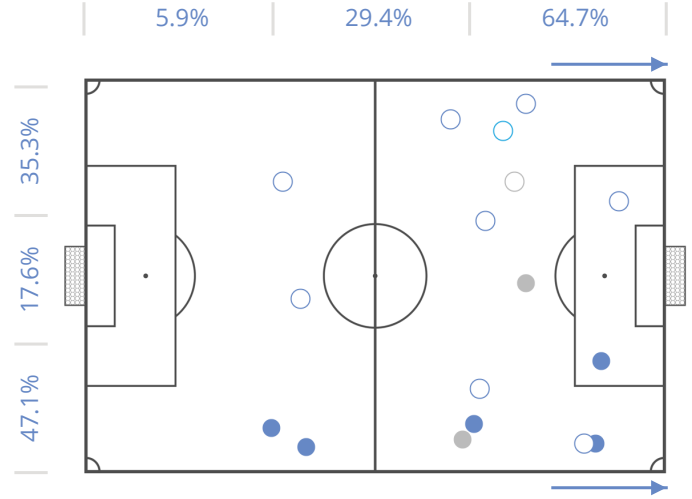
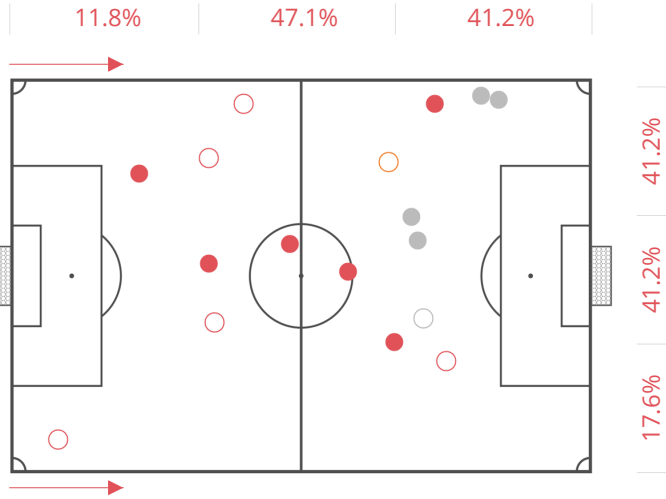
● NEUT.

● LOST

17

1 VS 1 DRIBBLING

17



BEST PLAYERS

DUELS WON NEUT. LOST

| | | | | |
|------------------|---|---|---|---|
| E. Kolici (90') | 9 | 6 | 0 | 3 |
| M. Bøje (90') | 4 | 2 | 0 | 2 |
| A. Laursen (90') | 1 | 1 | 0 | 0 |
| M. Holm (90') | 1 | 1 | 0 | 0 |
| N. Dohn (90') | 1 | 1 | 0 | 0 |

BEST PLAYERS

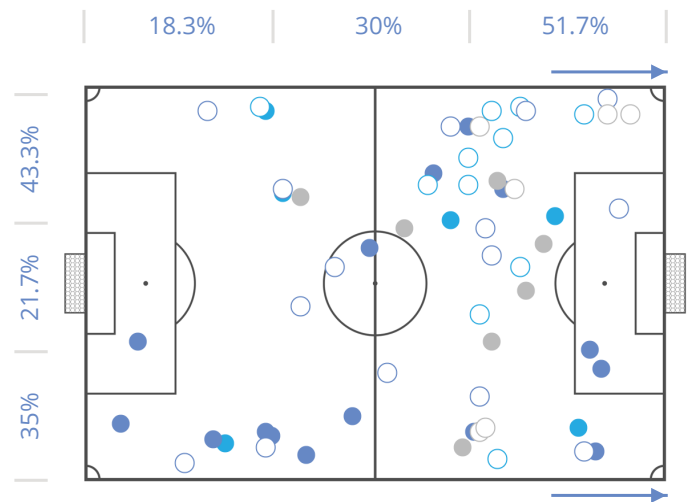
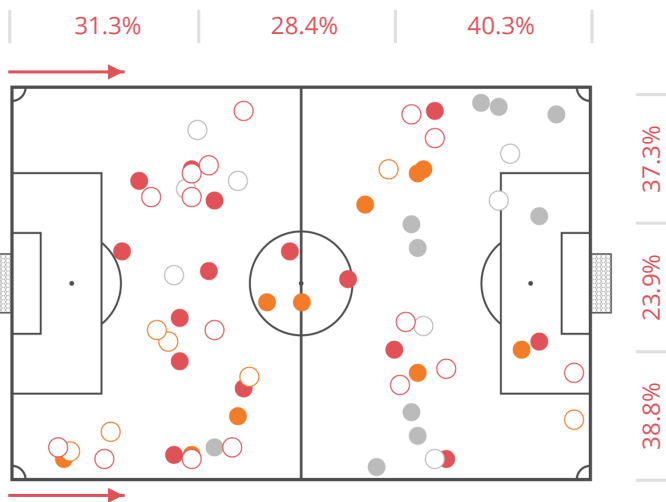
DUELS WON NEUT. LOST

| | | | | |
|--------------------------------|---|---|---|---|
| M. De Claville Bertelsen (90') | 6 | 4 | 1 | 1 |
| R. Espersen (90') | 5 | 4 | 0 | 1 |
| K. Petersen (90') | 2 | 2 | 0 | 0 |
| M. Dongsted (90') | 2 | 1 | 0 | 1 |
| K. Lehm (75') | 1 | 1 | 0 | 0 |

83

ATTACKING DUELS

90



BEST PLAYERS

DUELS WON NEUT. LOST

| | | | | |
|-----------------|----|---|---|---|
| E. Kolici (90') | 16 | 9 | 3 | 4 |
| G. Wiberg (90') | 12 | 3 | 5 | 4 |
| N. Dohn (90') | 11 | 6 | 1 | 4 |
| K. Larsen (87') | 8 | 3 | 2 | 3 |
| M. Bøje (90') | 7 | 3 | 1 | 3 |

BEST PLAYERS

DUELS WON NEUT. LOST

| | | | | |
|--------------------------------|----|---|---|---|
| M. De Claville Bertelsen (90') | 13 | 8 | 4 | 1 |
| R. Thomsen (64') | 10 | 2 | 5 | 3 |
| R. Espersen (90') | 8 | 6 | 1 | 1 |
| K. Petersen (90') | 6 | 4 | 0 | 2 |
| M. Dongsted (90') | 5 | 1 | 0 | 4 |

DUELS

● FIRST HALF

○ SECOND HALF



HORSENS U19

NÆSBY U19



● WON

○ NEUT.

● LOST

● WON

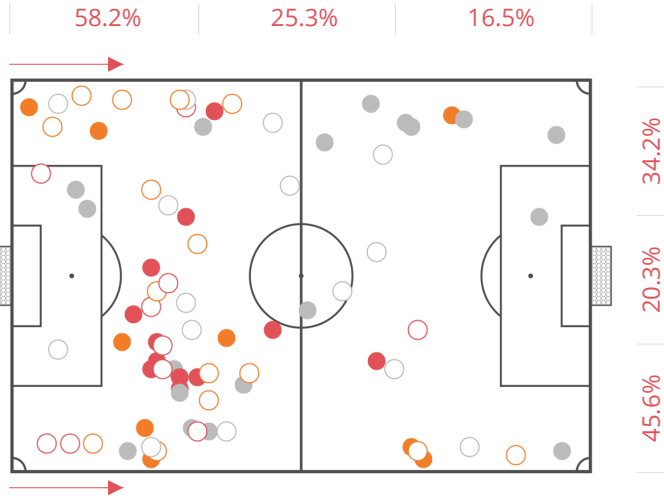
○ NEUT.

● LOST

90

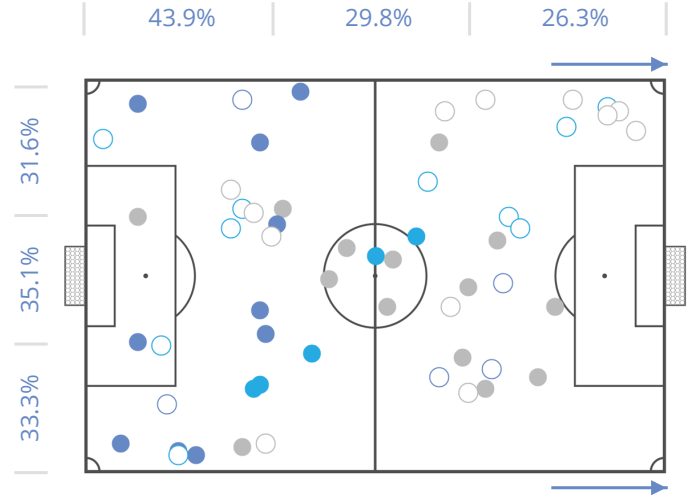
DEFENSIVE DUELS

83



BEST PLAYERS

| | DUELS | WON | NEUT. | LOST |
|-------------------|-------|-----|-------|------|
| N. Dohn (90') | 15 | 6 | 3 | 6 |
| T. Munkholm (90') | 14 | 7 | 5 | 2 |
| E. Kolicic (90') | 13 | 4 | 6 | 3 |
| G. Wiberg (90') | 7 | 0 | 3 | 4 |
| L. Kirkel (90') | 7 | 2 | 1 | 4 |



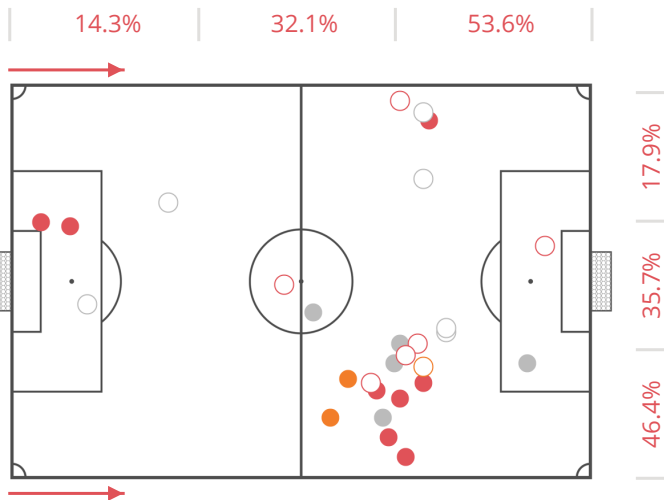
BEST PLAYERS

| | DUELS | WON | NEUT. | LOST |
|-------------------|-------|-----|-------|------|
| K. Petersen (90') | 11 | 3 | 3 | 5 |
| M. Damsbo (90') | 7 | 2 | 2 | 3 |
| O. Nielsen (90') | 7 | 0 | 3 | 4 |
| K. Lehm (75') | 6 | 1 | 2 | 3 |
| M. Dongsted (90') | 5 | 0 | 1 | 4 |

40

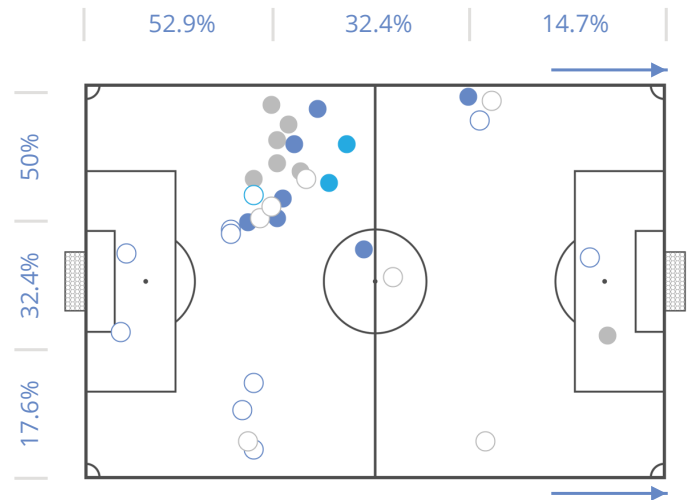
AERIAL DUELS

40



BEST PLAYERS

| | DUELS | WON | NEUT. | LOST |
|-----------------|-------|-----|-------|------|
| G. Wiberg (90') | 8 | 5 | 1 | 2 |
| D. Muller (90') | 5 | 3 | 0 | 2 |
| L. Kirkel (90') | 3 | 2 | 0 | 1 |
| M. Bøje (90') | 3 | 1 | 0 | 2 |
| N. Dohn (90') | 3 | 1 | 1 | 1 |



BEST PLAYERS

| | DUELS | WON | NEUT. | LOST |
|--------------------------------|-------|-----|-------|------|
| K. Petersen (90') | 5 | 1 | 2 | 2 |
| M. Damsbo (90') | 4 | 4 | 0 | 0 |
| M. De Claville Bertelsen (90') | 4 | 1 | 0 | 3 |
| J. Hansen (73') | 4 | 2 | 0 | 2 |
| M. Dongsted (90') | 3 | 1 | 0 | 2 |

DUELS GRID

NÆSBY U19

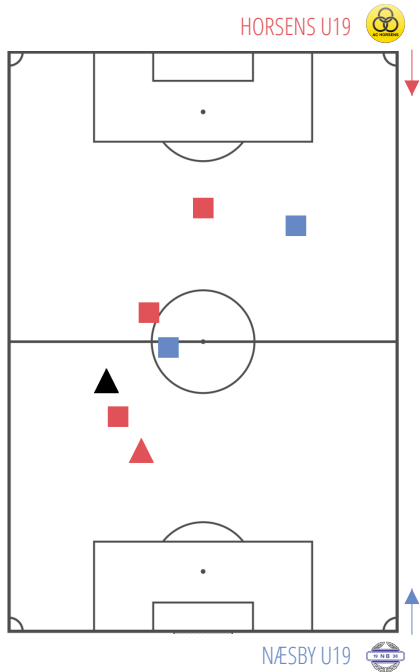
HORSENS U19

| | 1. J. Gadkjær | 13. R. Espersen | 5. J. Hansen | 4. M. Damsbo | 2. K. Lehm | 9. M. Dongsted | 10. M. De Claville Bertelsen | 7. T. Larsen | 11. O. Nielsen | 8. K. Petersen | 6. R. Thomsen | 12. E. Kingo Eriksen | 16. N. Risager | 3. E. Olsen |
|----------------|---------------|-----------------|--------------|--------------|------------|----------------|------------------------------|--------------|----------------|----------------|---------------|----------------------|----------------|-------------|
| 1. M. Bobjerg | | | | | | | | | | | | | | |
| 13. M. Bøje | | 7 | | | | 2 | | 2 | | 1 | 1 | | | |
| 3. L. Kirkel | | 1 | | | | 2 | | 1 | | | | | | |
| 2. M. Holm | | | | | 2 | 1 | 1 | | 2 | | 1 | | | |
| 5. T. Munkholm | | 1 | | | 1 | 1 | 2 | | 1 | | 6 | | | 1 |
| 4. A. Laursen | | | | | | | | | | | 1 | | | 1 |
| 10. E. Kolicic | | 2 | | 1 | 3 | 3 | 2 | 3 | 3 | 5 | 2 | | | 1 |
| 7. K. Larsen | 1 | 1 | 2 | 2 | 1 | 1 | | | 1 | | | | | |
| 6. G. Wiberg | | | 1 | 1 | 3 | 1 | 5 | 3 | 1 | 4 | 1 | | | |
| 8. N. Dohn | | 1 | | | 1 | | 3 | 2 | | 7 | 4 | | | |
| 11. D. Muller | | 1 | 2 | 3 | 3 | | | | | 5 | | 2 | | |
| 18. T. Rohde | | | | | | | | | | | | | | |

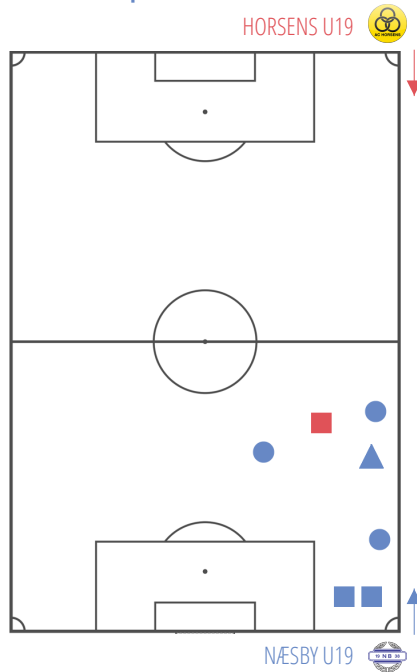
● WON BY HORSENS U19
 ● WON BY NÆSBY U19
 ● NEUTRAL DUELS

AIR CHALL.
 GROUND CHALL.
 ○ DRIBBLES

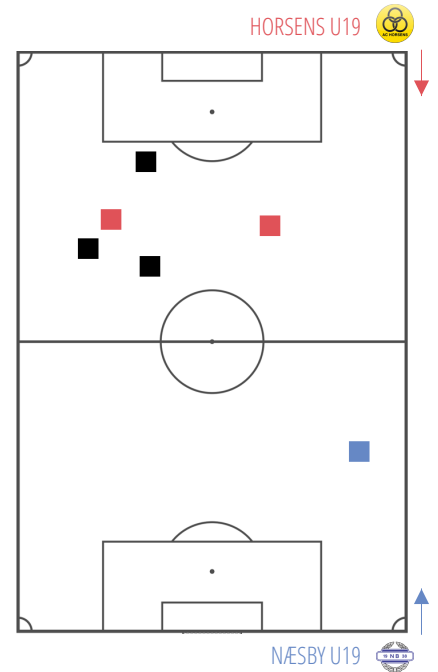
7 N. Dohn
K. Petersen



7 M. Bøje
R. Espersen

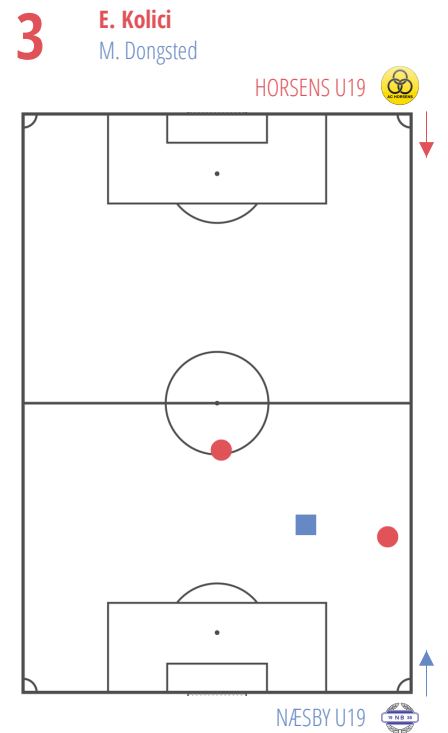
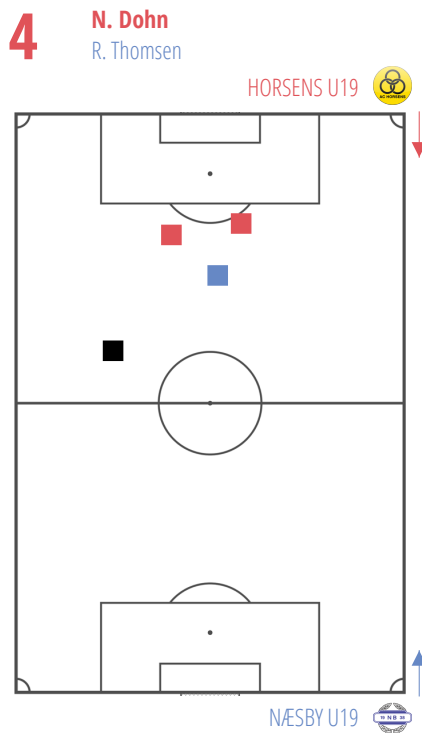
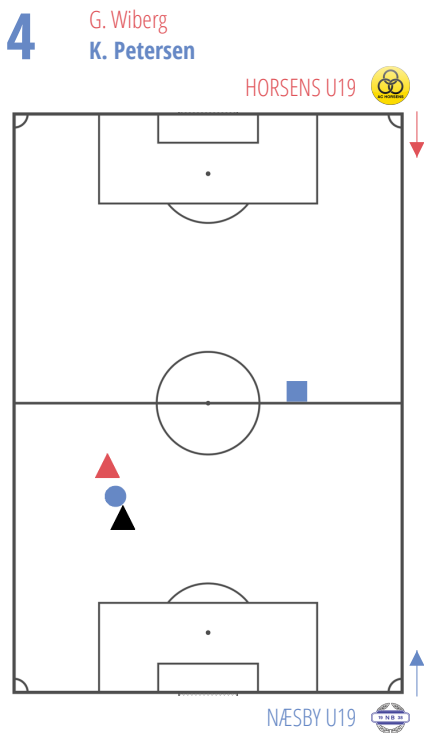
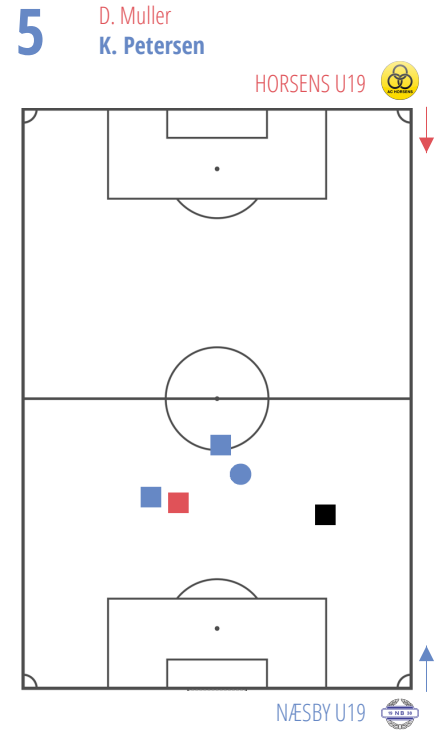
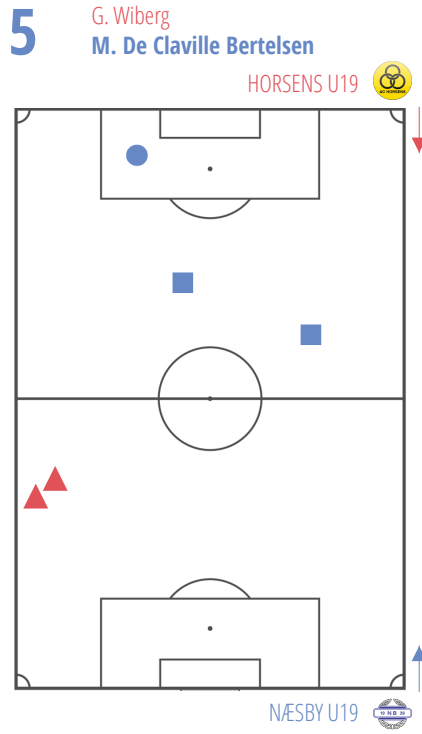
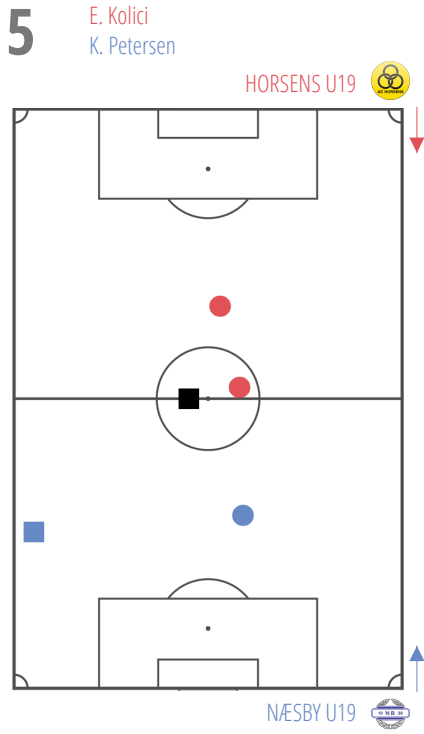


6 T. Munkholm
R. Thomsen

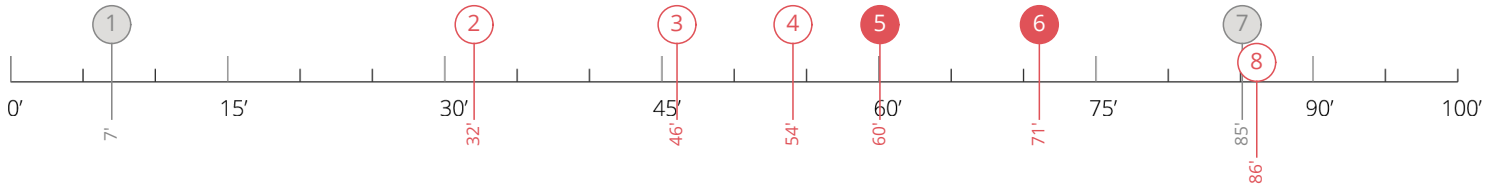


DUELS GRID

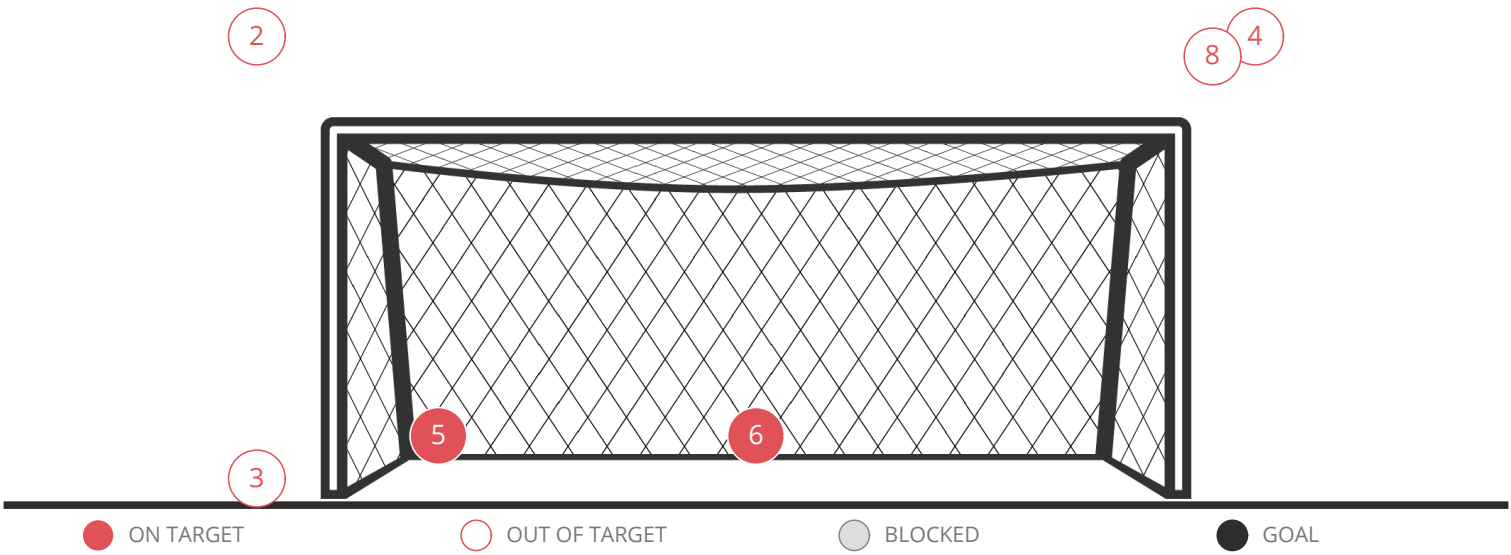
△ AIR CHALL. GROUND CHALL. ○ DRIBBLES
● WON BY HORSENS U19 ● WON BY NÆSBY U19 ● NEUTRAL DUELS



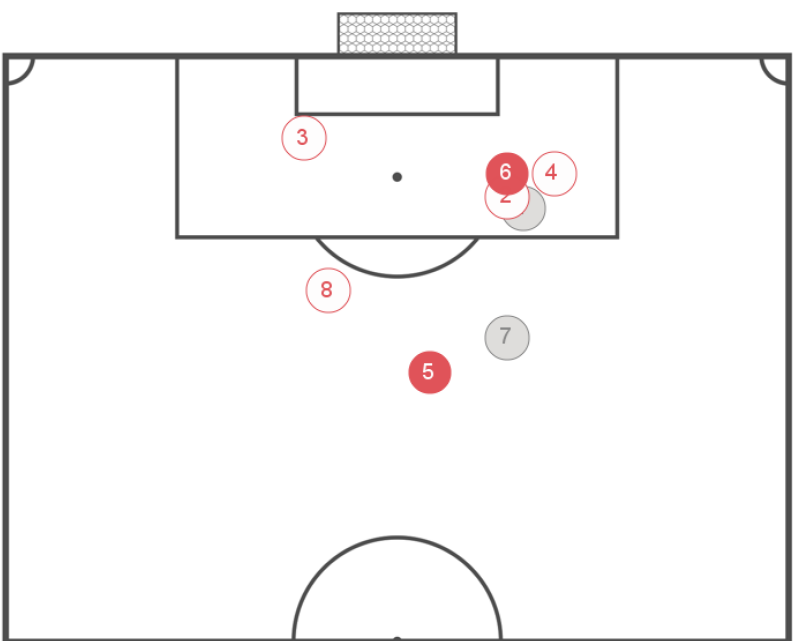
HORSENS U19: GOALS AND STRIKES



| | | | |
|-------------------|-----------------------|---------------------|-------------------|
| 8 SHOTS | 2 ON TARGET | 2 BLOCKED | 1 GOALS |
|-------------------|-----------------------|---------------------|-------------------|

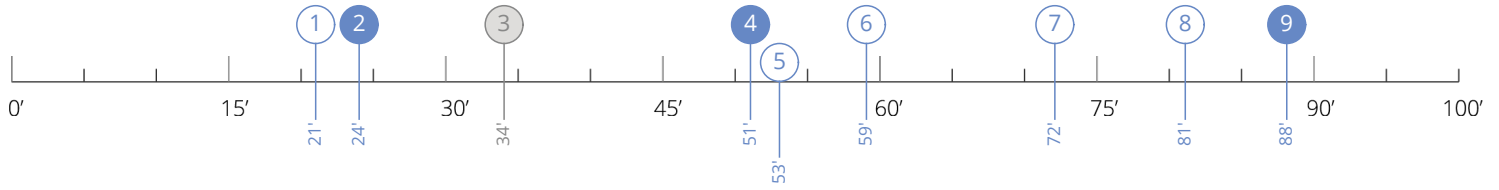


● ON TARGET ○ OUT OF TARGET ● BLOCKED ● GOAL

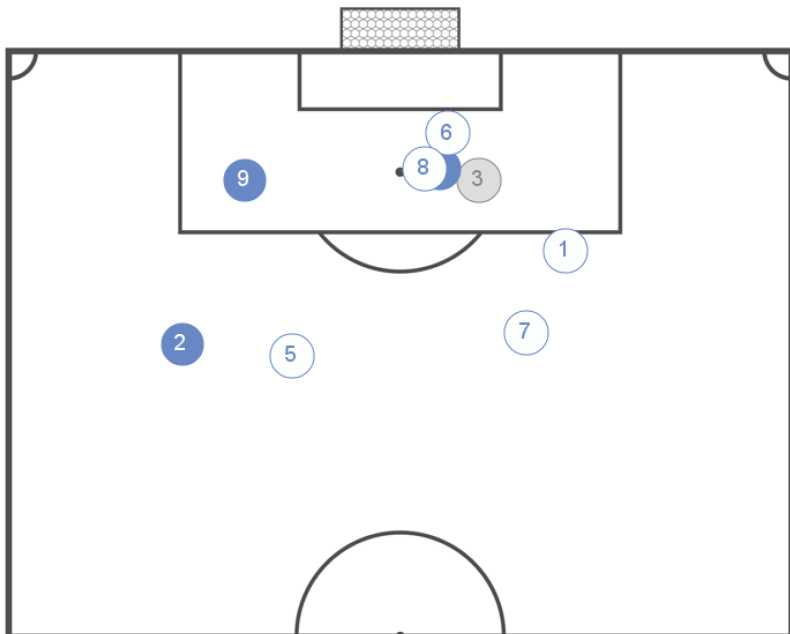
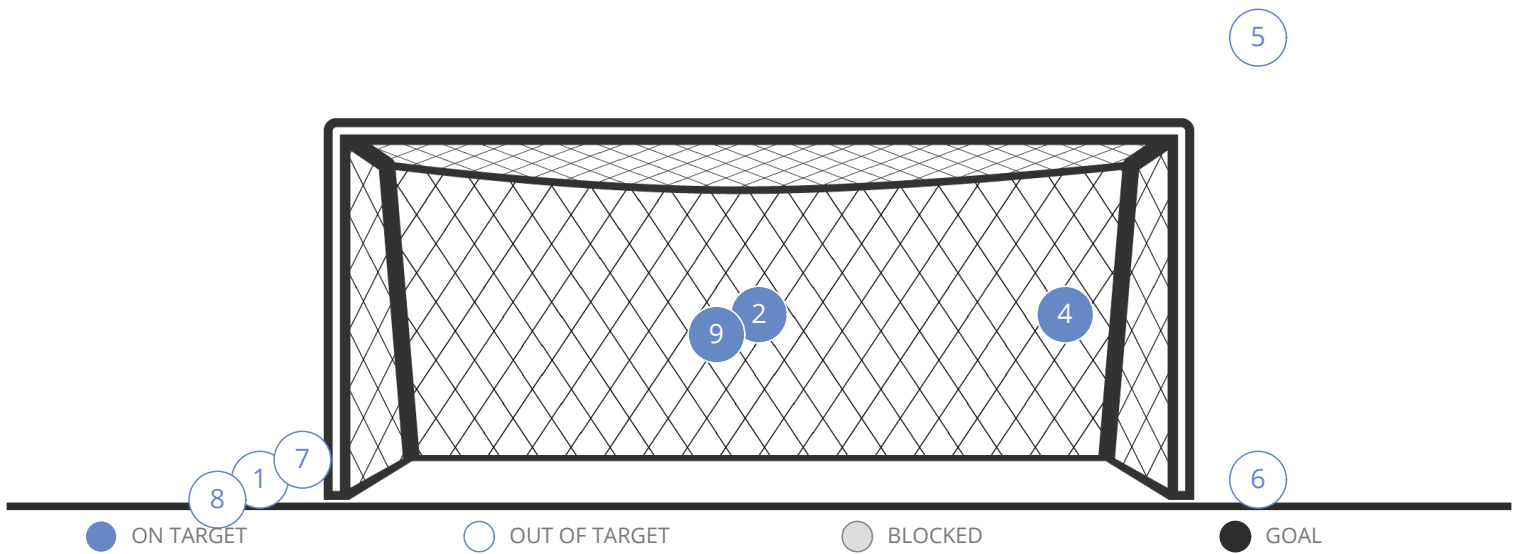


| PLAYERS | FOOT |
|-------------|---------|
| 1 D. Muller | Right |
| 2 K. Larsen | Right |
| 3 D. Muller | Heading |
| 4 D. Muller | Right |
| 5 G. Wiberg | Left |
| 6 K. Larsen | Right |
| 7 G. Wiberg | Right |
| 8 K. Larsen | Right |

NÆSBY U19: GOALS AND STRIKES



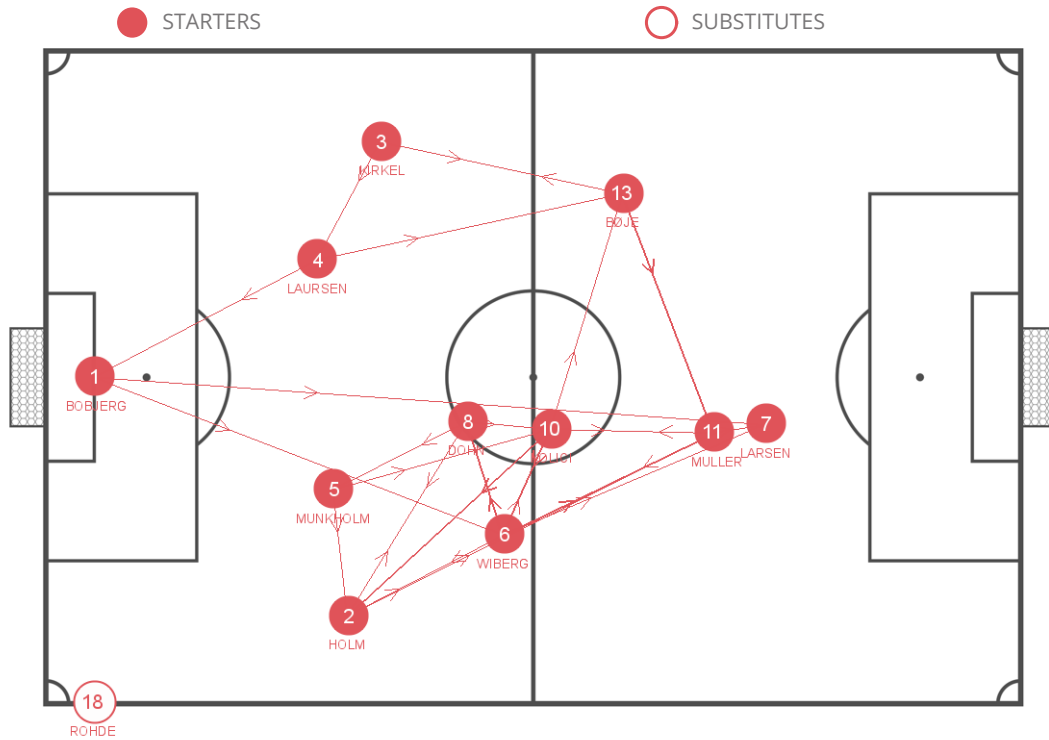
9 SHOTS 3 ON TARGET 1 BLOCKED 0 GOALS



PLAYERS

| | PLAYERS | FOOT |
|---|--------------------------|---------|
| 1 | M. Dongsted | Right |
| 2 | M. De Claville Bertelsen | Right |
| 3 | T. Larsen | Left |
| 4 | R. Thomsen | Right |
| 5 | M. De Claville Bertelsen | Right |
| 6 | R. Espersen | Heading |
| 7 | M. De Claville Bertelsen | Right |
| 8 | T. Larsen | Heading |
| 9 | M. De Claville Bertelsen | Right |

HORSENS U19: PASSES



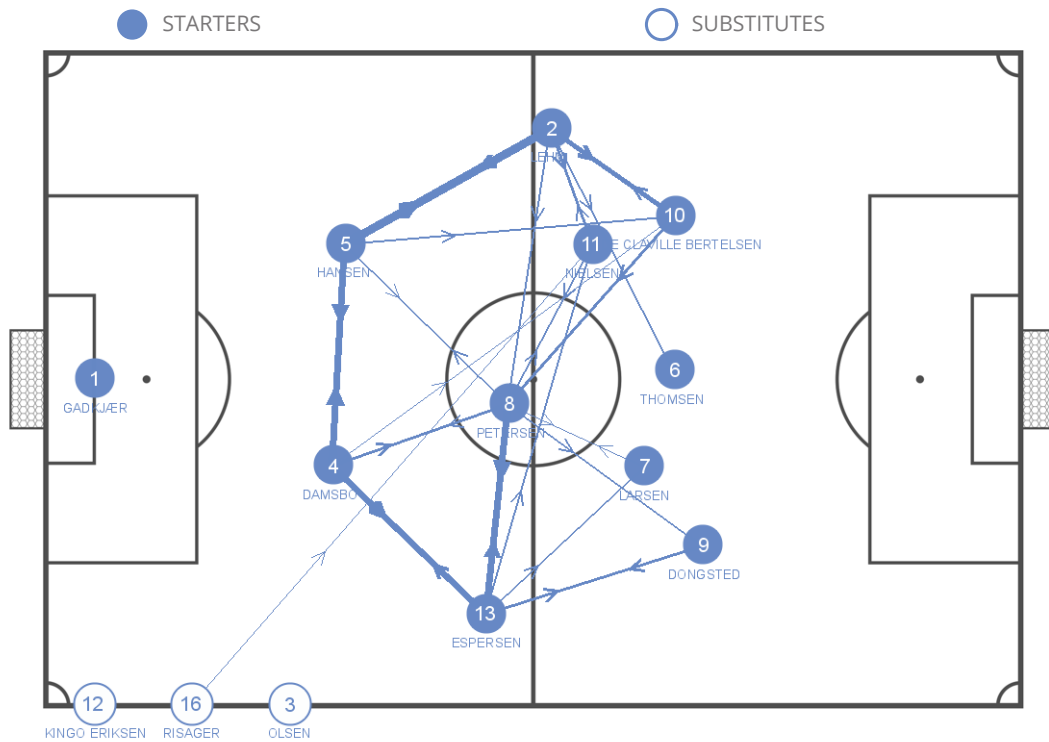
| | 1. M. Bobjerg | 13. M. Bøje | 3. L. Kirkel | 2. M. Holm | 5. T. Munkholm | 4. A. Laursen | 10. E. Kolici | 7. K. Larsen | 6. G. Wiberg | 8. N. Dohn | 11. D. Muller | 18. T. Rohde |
|----------------|---------------|-------------|--------------|------------|----------------|---------------|---------------|--------------|--------------|------------|---------------|--------------|
| 1. M. Bobjerg | | 1 | 1 | | 1 | | | 3 (2) | 3 (3) | 1 (1) | | |
| 13. M. Bøje | | | 3 | | | 1 | 2 | 1 | | 1 | 5 | |
| 3. L. Kirkel | | 3 | | | | 4 | 1 | 1 | | | | |
| 2. M. Holm | | | | | 1 | | 2 | | 4 (1) | 4 | 3 (3) | |
| 5. T. Munkholm | | | | 3 | | 1 | 4 (1) | 1 | 1 | 2 | 2 (2) | |
| 4. A. Laursen | 3 | 3 | | | 2 | | 1 | 1 (1) | 1 | | | |
| 10. E. Kolici | | 3 (1) | 1 | 7 | | 2 (1) | | | 7 (2) | 2 | 3 | |
| 7. K. Larsen | | 1 | | | | | | | 1 | | 2 (1) | |
| 6. G. Wiberg | | 1 | 1 | 4 | 1 | 1 | 4 | 3 (1) | | 5 | 5 | |
| 8. N. Dohn | | 2 (1) | 2 | 4 | 3 | 1 | 4 | 1 | 2 | | 1 | |
| 11. D. Muller | | 1 | 1 | 1 | | | 3 | 3 (1) | 3 | 1 | | 1 |
| 18. T. Rohde | | | | | | | | | | | 1 | |

PASSES RECEIVED BY THE PLAYER

PASSES MADE BY THE PLAYER

(*) HIGH PASSES

NÆSBY U19: PASSES



| | 1. J. Gadkjær | 13. R. Espersen | 5. J. Hansen | 4. M. Damsbo | 2. K. Lehm | 9. M. Dongsted | 10. M. De Claville Bertelsen | 7. T. Larsen | 11. O. Nielsen | 8. K. Petersen | 6. R. Thomsen | 12. E. Kingo Eriksen |
|------------------------------|---------------|-----------------|--------------|--------------|------------|----------------|------------------------------|--------------|----------------|----------------|---------------|----------------------|
| 1. J. Gadkjær | | | | 2 | 3 | | | | | | | 1 (1) |
| 13. R. Espersen | | | | 12 | | 8 | | 7 (1) | 5 | 14 | 3 | |
| 5. J. Hansen | 1 | 1 | | 16 | 23 | | 5 | 2 | 1 (1) | 4 | 1 (1) | |
| 4. M. Damsbo | | 18 | 18 | | 3 | 2 | 4 | 1 | 3 | 9 | 1 (1) | |
| 2. K. Lehm | 1 | | 13 | | | 1 (1) | 14 | | 8 (1) | 6 | 5 (1) | |
| 9. M. Dongsted | | 8 | | 1 | | | 1 | 2 | 2 | 3 | 3 | |
| 10. M. De Claville Bertelsen | | 2 | 2 | 2 | 8 (1) | 1 | | | 2 | 8 | | |
| 7. T. Larsen | | 2 | 1 | | 2 | 2 | 1 | | | 4 | 1 | |
| 11. O. Nielsen | | 1 | 3 | 2 | 5 (2) | 3 | 3 | 3 | | 5 | 2 | 1 |
| 8. K. Petersen | | 18 | 5 | 5 | 3 | 7 | 3 | 4 (1) | 7 | | 1 | 1 |
| 6. R. Thomsen | | 3 | 1 | | 1 | 1 | | | | 2 | | |
| 12. E. Kingo Eriksen | 1 | 1 | | 1 | | | | | 1 | 1 | | |

PASSES RECEIVED BY THE PLAYER

PASSES MADE BY THE PLAYER

(*) HIGH PASSES

HORSENS U19: PLAYER EVENTS

| | | MINUTES PLAYED | GOALS / GOALS ON PENALTY | ASSISTS | TOUCHES | SHOTS / ON TARGET | FOULS COMM. / CONCEDED | YELLOW CARDS / RED CARDS | OFFSIDES | FREE K. SHOTS / ON TARGET | FREE K. CROSS / ACCURATE | CORNERS / ACCURATE | THROW INS / ACCURATE |
|----|-------------|----------------|--------------------------|---------|---------|-------------------|------------------------|--------------------------|----------|---------------------------|--------------------------|--------------------|----------------------|
| 1 | M. Bobjerg | 90 | 0/0 | 0 | 15 | 0/0 | 0/0 | 0/0 | 0 | 0/0 | 0/0 | 0/0 | 0/0 |
| 13 | M. Bøje | 90 | 0/0 | 0 | 24 | 0/0 | 1/1 | 0/0 | 0 | 0/0 | 2/2 | 1/0 | 0/0 |
| 3 | L. Kirkel | 90 | 0/0 | 0 | 16 | 0/0 | 0/2 | 0/0 | 0 | 0/0 | 0/0 | 0/0 | 7/2 |
| 2 | M. Holm | 90 | 0/0 | 0 | 33 | 0/0 | 1/1 | 0/0 | 0 | 0/0 | 0/0 | 0/0 | 7/5 |
| 5 | T. Munkholm | 90 | 0/0 | 0 | 23 | 0/0 | 0/0 | 0/0 | 1 | 0/0 | 0/0 | 0/0 | 0/0 |
| 4 | A. Laursen | 90 | 0/0 | 0 | 23 | 0/0 | 1/0 | 0/0 | 0 | 0/0 | 0/0 | 0/0 | 0/0 |
| 10 | E. Kolic | 90 | 0/0 | 0 | 32 | 0/0 | 0/0 | 0/0 | 0 | 0/0 | 1/1 | 0/0 | 0/0 |
| 7 | K. Larsen | 87 | 0/0 | 0 | 10 | 3/1 | 1/2 | 0/0 | 1 | 0/0 | 0/0 | 0/0 | 1/1 |
| 6 | G. Wiberg | 90 | 0/0 | 0 | 40 | 2/1 | 1/2 | 1/0 | 1 | 0/0 | 0/0 | 0/0 | 1/0 |
| 8 | N. Dohn | 90 | 1/1 | 0 | 30 | 0/0 | 2/2 | 0/0 | 0 | 0/0 | 0/0 | 0/0 | 0/0 |
| 11 | D. Muller | 90 | 0/0 | 0 | 21 | 3/0 | 4/1 | 0/0 | 2 | 0/0 | 0/0 | 0/0 | 0/0 |
| 18 | T. Rohde | 3 | 0/0 | 0 | 3 | 0/0 | 0/0 | 0/0 | 0 | 0/0 | 0/0 | 0/0 | 0/0 |

| | | DUELS / WON | GROUND CHALL. / WON | AIR CHALL. / WON | ATTACKING CHALL. | DEFENDING CHALL. | DRIBBLES | TACKLES | DEFENDING 1V1 | RECOVERED IN OPP. HALF | LOSSES IN OPP. HALF |
|----|-------------|-------------|---------------------|------------------|------------------|------------------|----------|---------|---------------|------------------------|---------------------|
| 1 | M. Bobjerg | 0/0 | 0/0 | 0/0 | 0 | 0 | 0 | 0 | 0 | 0 | 0 |
| 13 | M. Bøje | 15/5 | 12/4 | 3/1 | 7 | 4 | 4 | 0 | 1 | 3 | 2 |
| 3 | L. Kirkel | 11/5 | 8/3 | 3/2 | 1 | 7 | 0 | 0 | 2 | 0 | 2 |
| 2 | M. Holm | 10/4 | 9/4 | 1/0 | 4 | 5 | 1 | 0 | 0 | 0 | 2 |
| 5 | T. Munkholm | 16/7 | 15/7 | 1/0 | 0 | 14 | 0 | 3 | 2 | 0 | 0 |
| 4 | A. Laursen | 6/2 | 6/2 | 0/0 | 1 | 5 | 1 | 1 | 1 | 0 | 0 |
| 10 | E. Kolic | 34/14 | 32/13 | 2/1 | 16 | 13 | 9 | 1 | 3 | 4 | 2 |
| 7 | K. Larsen | 17/4 | 15/3 | 2/1 | 8 | 6 | 1 | 0 | 1 | 1 | 4 |
| 6 | G. Wiberg | 27/8 | 19/3 | 8/5 | 12 | 7 | 0 | 0 | 2 | 1 | 3 |
| 8 | N. Dohn | 32/15 | 29/14 | 3/1 | 11 | 15 | 1 | 1 | 1 | 1 | 1 |
| 11 | D. Muller | 20/8 | 15/5 | 5/3 | 6 | 3 | 0 | 0 | 1 | 1 | 5 |
| 18 | T. Rohde | 1/1 | 1/1 | 0/0 | 1 | 0 | 0 | 0 | 0 | 0 | 0 |

| | | PASSES / ACCURATE | % ACCURATE | LONG PASSES / ACCURATE | THROUGH PASSES / ACCURATE | IN THE BOX / ACCURATE | CROSSES / ACCURATE | CROSS FROM BYLINE | CROSS HIGH | CROSS LOW | CROSS BLOCKED |
|----|-------------|-------------------|------------|------------------------|---------------------------|-----------------------|--------------------|-------------------|------------|-----------|---------------|
| 1 | M. Bobjerg | 14/11 | 79 | 9/8 | 0/0 | 0/0 | 0/0 | 0 | 0 | 0 | 0 |
| 13 | M. Bøje | 21/14 | 67 | 0/0 | 0/0 | 2/2 | 5/3 | 3 | 2 | 2 | 1 |
| 3 | L. Kirkel | 14/10 | 72 | 2/0 | 2/1 | 0/0 | 0/0 | 0 | 0 | 0 | 0 |
| 2 | M. Holm | 29/15 | 52 | 11/5 | 0/0 | 0/0 | 2/0 | 1 | 1 | 0 | 1 |
| 5 | T. Munkholm | 22/17 | 78 | 4/4 | 0/0 | 1/1 | 0/0 | 0 | 0 | 0 | 0 |
| 4 | A. Laursen | 22/12 | 55 | 6/1 | 0/0 | 1/1 | 0/0 | 0 | 0 | 0 | 0 |
| 10 | E. Kolic | 32/25 | 79 | 4/3 | 1/0 | 0/0 | 1/0 | 0 | 1 | 0 | 0 |
| 7 | K. Larsen | 7/5 | 72 | 1/1 | 0/0 | 2/1 | 1/0 | 1 | 1 | 0 | 0 |
| 6 | G. Wiberg | 37/27 | 73 | 4/1 | 1/0 | 0/0 | 0/0 | 0 | 0 | 0 | 0 |
| 8 | N. Dohn | 26/21 | 81 | 2/1 | 0/0 | 0/0 | 0/0 | 0 | 0 | 0 | 0 |
| 11 | D. Muller | 20/16 | 80 | 1/1 | 0/0 | 1/0 | 0/0 | 0 | 0 | 0 | 0 |
| 18 | T. Rohde | 3/1 | 34 | 0/0 | 0/0 | 0/0 | 0/0 | 0 | 0 | 0 | 0 |

NÆSBY U19: PLAYER EVENTS

| | | MINUTES PLAYED | GOALS / GOALS ON PENALTY | ASSISTS | TOUCHES | SHOTS / ON TARGET | FOULS COMM. / CONCEDED | YELLOW CARDS / RED CARDS | OFFSIDES | FREE K. SHOTS / ON TARGET | FREE K. CROSS / ACCURATE | CORNERS / ACCURATE | THROW INS / ACCURATE |
|----|--------------------------|----------------|--------------------------|---------|---------|-------------------|------------------------|--------------------------|----------|---------------------------|--------------------------|--------------------|----------------------|
| 1 | J. Gadkjær | 90 | 0/0 | 0 | 8 | 0/0 | 0/0 | 0/0 | 0 | 0/0 | 0/0 | 0/0 | 0/0 |
| 13 | R. Espersen | 90 | 0/0 | 0 | 69 | 1/0 | 0/1 | 0/0 | 0 | 0/0 | 0/0 | 0/0 | 5/5 |
| 5 | J. Hansen | 73 | 0/0 | 0 | 58 | 0/0 | 0/0 | 0/0 | 0 | 0/0 | 0/0 | 0/0 | 0/0 |
| 4 | M. Damsbo | 90 | 0/0 | 0 | 73 | 0/0 | 1/1 | 0/0 | 0 | 0/0 | 0/0 | 0/0 | 2/2 |
| 2 | K. Lehm | 75 | 0/0 | 0 | 65 | 0/0 | 1/3 | 1/0 | 0 | 0/0 | 0/0 | 0/0 | 4/4 |
| 9 | M. Dongsted | 90 | 0/0 | 0 | 29 | 1/0 | 3/0 | 0/0 | 0 | 0/0 | 0/0 | 0/0 | 1/1 |
| 10 | M. De Claville Bertelsen | 90 | 0/0 | 0 | 39 | 4/2 | 0/1 | 0/0 | 0 | 0/0 | 0/0 | 2/1 | 0/0 |
| 7 | T. Larsen | 90 | 0/0 | 0 | 22 | 2/0 | 1/0 | 0/0 | 0 | 0/0 | 1/1 | 1/1 | 0/0 |
| 11 | O. Nielsen | 90 | 0/0 | 0 | 44 | 0/0 | 2/0 | 0/0 | 0 | 0/0 | 0/0 | 0/0 | 0/0 |
| 8 | K. Petersen | 90 | 0/0 | 0 | 70 | 0/0 | 1/4 | 0/0 | 0 | 0/0 | 0/0 | 0/0 | 0/0 |
| 6 | R. Thomsen | 64 | 0/0 | 0 | 14 | 1/1 | 2/1 | 0/0 | 0 | 0/0 | 0/0 | 0/0 | 0/0 |
| 12 | E. Kingo Eriksen | 17 | 0/0 | 0 | 11 | 0/0 | 0/0 | 0/0 | 0 | 0/0 | 0/0 | 0/0 | 0/0 |
| 16 | N. Risager | 15 | 0/0 | 0 | 13 | 0/0 | 0/0 | 0/0 | 0 | 0/0 | 0/0 | 0/0 | 3/3 |
| 3 | E. Olsen | 26 | 0/0 | 0 | 11 | 0/0 | 0/0 | 0/0 | 1 | 0/0 | 0/0 | 0/0 | 0/0 |

| | | DUELS / WON | GROUND CHALL. / WON | AIR CHALL. / WON | ATTACKING CHALL. | DEFENDING CHALL. | DRIBBLES | TACKLES | DEFENDING 1V1 | RECOVERED IN OPP. HALF | LOSSES IN OPP. HALF |
|----|--------------------------|-------------|---------------------|------------------|------------------|------------------|----------|---------|---------------|------------------------|---------------------|
| 1 | J. Gadkjær | 1/1 | 0/0 | 1/1 | 0 | 0 | 0 | 0 | 0 | 0 | 0 |
| 13 | R. Espersen | 18/11 | 15/9 | 3/2 | 8 | 4 | 5 | 0 | 2 | 1 | 4 |
| 5 | J. Hansen | 9/7 | 5/5 | 4/2 | 1 | 3 | 0 | 0 | 0 | 1 | 0 |
| 4 | M. Damsbo | 13/8 | 9/4 | 4/4 | 2 | 7 | 0 | 2 | 4 | 1 | 0 |
| 2 | K. Lehm | 16/8 | 14/6 | 2/2 | 5 | 6 | 1 | 1 | 1 | 4 | 2 |
| 9 | M. Dongsted | 14/3 | 11/2 | 3/1 | 5 | 5 | 2 | 0 | 3 | 0 | 5 |
| 10 | M. De Claville Bertelsen | 21/11 | 17/10 | 4/1 | 13 | 2 | 6 | 0 | 0 | 2 | 6 |
| 7 | T. Larsen | 11/4 | 9/3 | 2/1 | 4 | 5 | 0 | 0 | 1 | 1 | 3 |
| 11 | O. Nielsen | 12/0 | 11/0 | 1/0 | 4 | 7 | 0 | 0 | 1 | 2 | 7 |
| 8 | K. Petersen | 25/10 | 20/9 | 5/1 | 6 | 11 | 2 | 1 | 3 | 1 | 3 |
| 6 | R. Thomsen | 16/4 | 14/3 | 2/1 | 10 | 4 | 0 | 0 | 0 | 0 | 4 |
| 12 | E. Kingo Eriksen | 4/1 | 3/1 | 1/0 | 0 | 2 | 0 | 0 | 0 | 0 | 1 |
| 16 | N. Risager | 1/0 | 0/0 | 1/0 | 0 | 0 | 0 | 0 | 0 | 0 | 0 |
| 3 | E. Olsen | 6/3 | 4/2 | 2/1 | 2 | 1 | 1 | 0 | 1 | 0 | 1 |

| | | PASSES / ACCURATE | % ACCURATE | LONG PASSES / ACCURATE | THROUGH PASSES / ACCURATE | IN THE BOX / ACCURATE | CROSSES / ACCURATE | CROSS FROM BYLINE | CROSS HIGH | CROSS LOW | CROSS BLOCKED |
|----|--------------------------|-------------------|------------|------------------------|---------------------------|-----------------------|--------------------|-------------------|------------|-----------|---------------|
| 1 | J. Gadkjær | 7/6 | 86 | 2/1 | 0/0 | 0/0 | 0/0 | 0 | 0 | 0 | 0 |
| 13 | R. Espersen | 67/56 | 84 | 3/2 | 0/0 | 0/0 | 1/0 | 0 | 0 | 1 | 0 |
| 5 | J. Hansen | 57/55 | 97 | 3/2 | 1/0 | 0/0 | 0/0 | 0 | 0 | 0 | 0 |
| 4 | M. Damsbo | 70/60 | 86 | 7/2 | 0/0 | 0/0 | 0/0 | 0 | 0 | 0 | 0 |
| 2 | K. Lehm | 61/50 | 82 | 4/3 | 1/0 | 0/0 | 3/0 | 3 | 1 | 0 | 2 |
| 9 | M. Dongsted | 28/21 | 75 | 0/0 | 0/0 | 1/0 | 3/0 | 3 | 1 | 1 | 1 |
| 10 | M. De Claville Bertelsen | 38/30 | 79 | 3/1 | 1/0 | 2/1 | 2/0 | 2 | 1 | 0 | 1 |
| 7 | T. Larsen | 20/14 | 70 | 1/0 | 1/0 | 0/0 | 3/0 | 2 | 2 | 1 | 0 |
| 11 | O. Nielsen | 42/34 | 81 | 4/4 | 0/0 | 0/0 | 1/0 | 0 | 1 | 0 | 0 |
| 8 | K. Petersen | 69/58 | 85 | 7/2 | 0/0 | 0/0 | 0/0 | 0 | 0 | 0 | 0 |
| 6 | R. Thomsen | 14/8 | 58 | 0/0 | 1/0 | 0/0 | 0/0 | 0 | 0 | 0 | 0 |
| 12 | E. Kingo Eriksen | 9/7 | 78 | 0/0 | 0/0 | 0/0 | 0/0 | 0 | 0 | 0 | 0 |
| 16 | N. Risager | 13/9 | 70 | 1/0 | 0/0 | 0/0 | 3/1 | 2 | 1 | 2 | 0 |
| 3 | E. Olsen | 11/7 | 64 | 0/0 | 0/0 | 1/0 | 2/0 | 1 | 0 | 2 | 0 |

MATCH REPORT GUIDE

SECTION 1

AVERAGE POSITIONS

Players position is calculated on an average detected point which takes into consideration every kind of action, including those with no ball possession.

White-filled circles are substitutes indicators.

Players whose jersey number is not provided are identified with an increasing negative number.

SECTION 2

GENERALS**Average position**

It shows the barycentre of the team, considering the average place of its actions.

CONSTRUCTION**Actions started by goalkeeper**

It considers all the actions started by the goalkeeper. It will be considered as a single one even if inside the same action he is involved more than once before the ball crosses the halfway line.

Long pass

Number of throws beyond the halfway line.

Low

Number of throws to a fellow teammate inside his half of the field.

Right

Number of actions crossing the halfway line in the right side.

Left

Number of actions crossing the halfway line in the left side.

Center

Number of actions crossing the halfway line in the central area.

Failed

Number of actions stopped before crossing the halfway line.

ATTACKING PLAY**Actions finalization**

It shows team offensive dangerousness and the way it is carried out.

Shot from outside of penalty area

Number of team shots from outside the penalty area.

Crosses

It shows how many finalizations are completed straight after a cross from the flanks.

Build-Up play

It shows how many finalizations are completed straight after a build-up play.

Long ball

It shows how many finalizations are completed straight after a long ball.

DEFENSIVE**Final Third Entries**

Number of times the opponent team plays the ball between the halfway line and the penalty area.

Fouls near the box

Number of fouls committed by the team nearby its penalty areas

SECTION 3

TERRITORIAL COVERAGE**Ball possession recovery**

It only takes into consideration the actual number of ball possession recoveries, even if temporary. Recoveries caused by opponents mistakes are not considered (i.e. ball kicked out of the pitch by the opponent).

SECTION 4

DUELS**Attacking duels**

Number of duels carried out when the team has ball possession.

Defensive duels

Number of duels carried out when the opponent team has ball possession.

SECTION 7

PASSES

Players position is calculated on an average detected point based on the position occupied, considering every kind of action, including those with no ball possession.

Lines connecting players show the number of passes. The thicker is the line, the higher is the number of passes between each other.