



01/10/2016
U19 DIVISION 2016/2017

2 - 1



ROSKILDE U19

Coach :

NÆSBY U19

Coach :



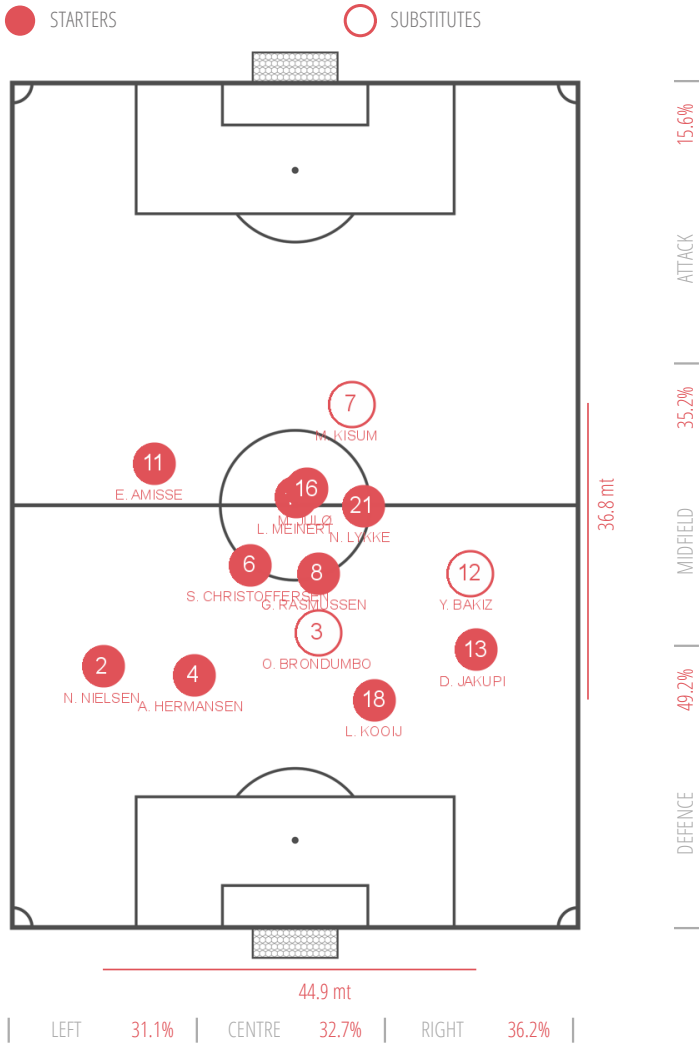
1	GKP	R. Holmager ('97)				1	GKP	C. Frost Jensen (')		
18	DEF	L. Kooij ('99)				13	DEF	R. Espersen ('99)		
13	DEF	D. Jakupi ('99)				6	DEF	R. Rasmussen ('98)	70'	
2	DEF	N. Nielsen ('98)				4	DEF	M. Damsbo ('98)	81'	
4	DEF	A. Hermansen ('97)				2	DEF	K. Lehm ('98)		
6	DEF	S. Christoffersen ('99)	68'		39'	3	MID	E. Olsen ('99)	66'	
8	MID	G. Rasmussen ('98)				12	MID	A. Kjerstad ('99)	46'	
17	MID	L. Meinert ('98)	46'			10	MID	M. De Claville Bertelse		
16	MID	M. Julø ('98)			76'	7	MID	T. Larsen ('98)		
11	MID	E. Amisse ('98)	55'			11	MID	O. Nielsen ('99)		
21	FWD	N. Lykke ('99)			43'	8	MID	K. Petersen ('99)	78'	

SUBSTITUTES

12	MID	Y. Bakiz ('99)	55'			5	DEF	J. Hansen ('98)	81'	
3	MID	O. Brondumbo ('98)	68'			9	MID	M. Dongsted ('99)	46'	
7	MID	M. Kisum ('99)	46'		81'	14	FWD	A. Al-Badri ('99)	66'	

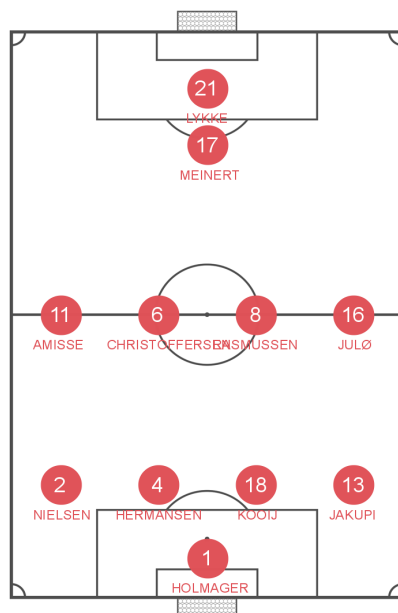
ROSKILDE U19

AVERAGE POSITIONS



PLAYERS

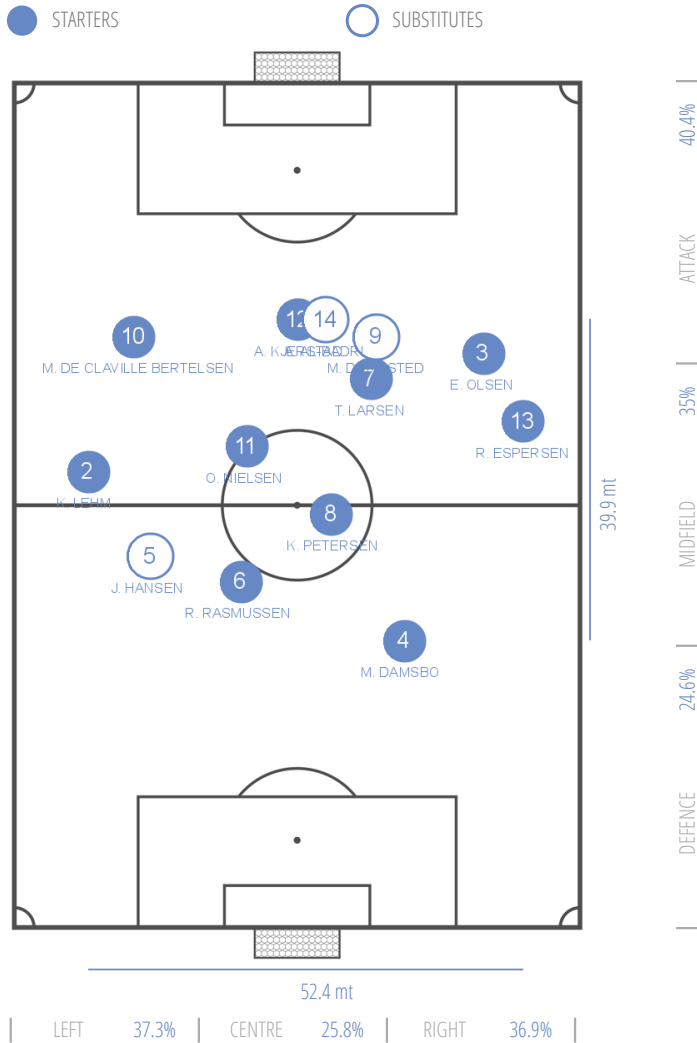
18	DEF	L. Kooij
13	DEF	D. Jakupi
2	DEF	N. Nielsen
4	DEF	A. Hermansen
6	DEF	S. Christoffersen
8	MID	G. Rasmussen
17	MID	L. Meinert
16	MID	M. Julø
11	MID	E. Amisse
21	FWD	N. Lykke
12	MID	Y. Bakiz
3	MID	O. Brondumbo
7	MID	M. Kisum



4-4-1-1
Used from 0' >> 94'

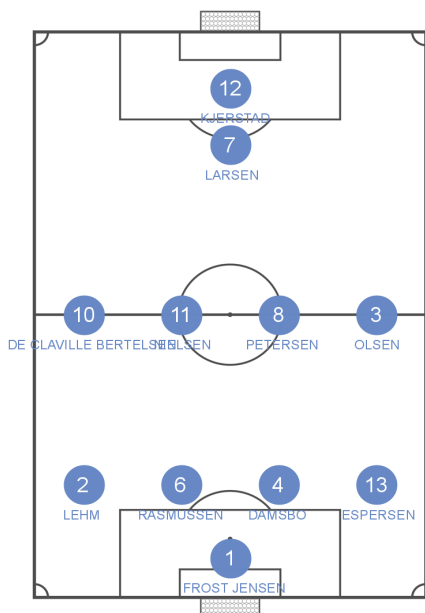
NÆSBY U19

AVERAGE POSITIONS

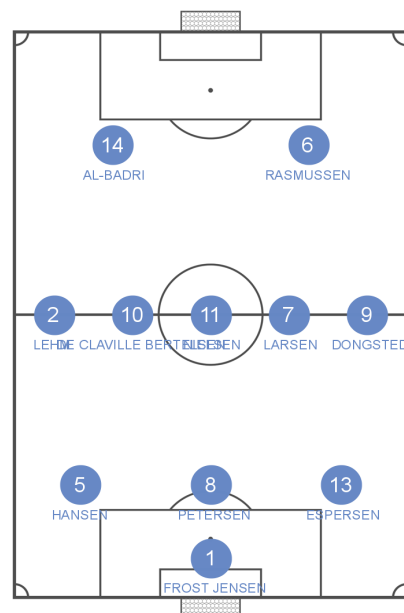


PLAYERS

13	DEF	R. Espersen
6	DEF	R. Rasmussen
4	DEF	M. Damsbo
2	DEF	K. Lehm
3	MID	E. Olsen
12	MID	A. Kjerstad
10	MID	M. De Claville Bertelsen
7	MID	T. Larsen
11	MID	O. Nielsen
8	MID	K. Petersen
5	DEF	J. Hansen
9	MID	M. Dongsted
14	FWD	A. Al-Badri



4-4-1-1
Used from 0' >> 81'



3-5-2
Used from 81' >> 94'



ROSKILDE U19



NÆSBY U19

	1 HALF	2 HALF	TOTAL	1 HALF	2 HALF	TOTAL
GENERALS						
BALL POSSESSION	15 min	15 min	30 min	18 min	15 min	33 min
AVERAGE POSITION	43.1 mt	40.5 mt	41.8 mt	55.5 mt	62.3 mt	58.9 mt
CORNERS	3	1	4	1	6	7
FREE KICK CROSS	1	2	3	0	5	5
FREE KICK SHOT	0	1	1	1	0	1
FOULS	5	6	11	5	8	13
OFFSIDES	1	3	4	1	1	2

CONSTRUCTION						
PASSES (% ACCURATE)	241 (87.1%)	173 (78.6%)	414 (83.6%)	269 (86.6%)	180 (74.4%)	449 (81.7%)
- Final Third Entries (% Accurate)	27 (77.8%)	21 (61.9%)	48 (70.8%)	81 (80.2%)	78 (66.7%)	159 (73.6%)
- Other (% Accurate)	214 (88.3%)	152 (80.9%)	366 (85.2%)	188 (89.4%)	102 (80.4%)	290 (86.2%)
LONG PASSES (% ACCURATE)	28 (53.6%)	24 (58.3%)	52 (55.8%)	25 (56%)	32 (59.4%)	57 (57.9%)
THROUGH PASSES (% ACCURATE)	4 (25%)	3 (33.3%)	7 (28.6%)	2 (50%)	2 (50%)	4 (50%)
COUNTERATTACKS	2	2	4	0	0	0
ACTIONS STARTED BY GOALKEEPER	14	27	41	9	11	20
- Long pass	2	8	10	1	0	1
- LOW	10	19	29	8	10	18
-- % Right	30%	47.4%	41.4%	0%	50%	27.8%
-- % Left	40%	26.3%	31%	50%	10%	27.8%
-- % Center	20%	26.3%	24.1%	50%	10%	27.8%
-- % Failed	10%	0%	3.4%	0%	30%	16.7%



ROSKILDE U19



NÆSBY U19

	1 HALF	2 HALF	TOTAL	1 HALF	2 HALF	TOTAL
ATTACKING PLAY						
OPPORTUNITY (% SUCCESSFUL)	3 (33.3%)	3 (33.3%)	6 (33.3%)	2 (0%)	11 (9.1%)	13 (7.7%)
SHOTS	4	3	7	2	12	14
Shot from outside of penalty area	0	0	0	1	4	5
Shot from inside of penalty area	4	3	7	1	8	9
ACTIONS FINALIZATION	6	6	12	5	13	18
- Shot from outside of penalty area	0	0	0	1	4	5
- CROSSES	0	2	2	1	4	5
-- From left (%)	0	0	0 (0%)	0	1 (25%)	1 (20%)
-- From right (%)	0	2 (100%)	2 (100%)	1 (100%)	3 (75%)	4 (80%)
- Build-Up play	5	3	8	3	3	6
- Long ball	1	1	2	0	2	2
DEFENSIVE						
SAVES	1	4	5	1	1	2
CLEARANCES	3	3	6	1	5	6
- Low	0	0	0	0	0	0
- High	3	3	6	1	5	6
BALL RECOVERY	45	50	95	31	51	82
- End action	8	10	18	10	26	36
- Real recovery	15	15	30	1	-11	-10
- Temporary recovery	22	25	47	20	36	56
FINAL THIRD ENTRIES	28	25	53	28	54	82
FOULS NEAR THE BOX	0	0	0	0	0	0

TERRITORIAL COVERAGE



ROSKILDE U19

NÆSBY U19



● FIRST HALF

○ SECOND HALF

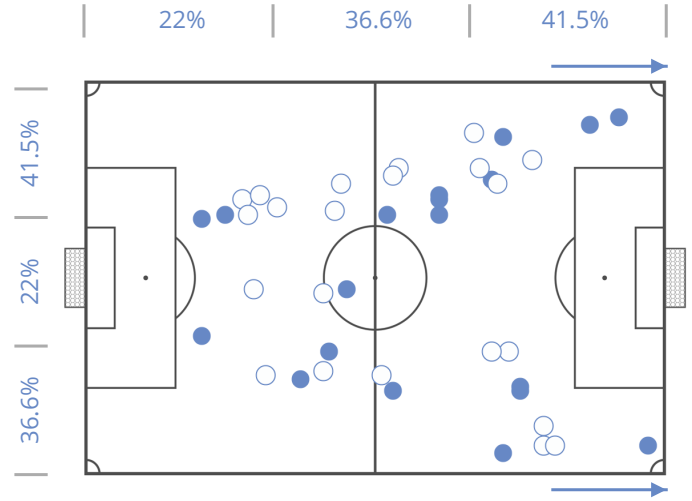
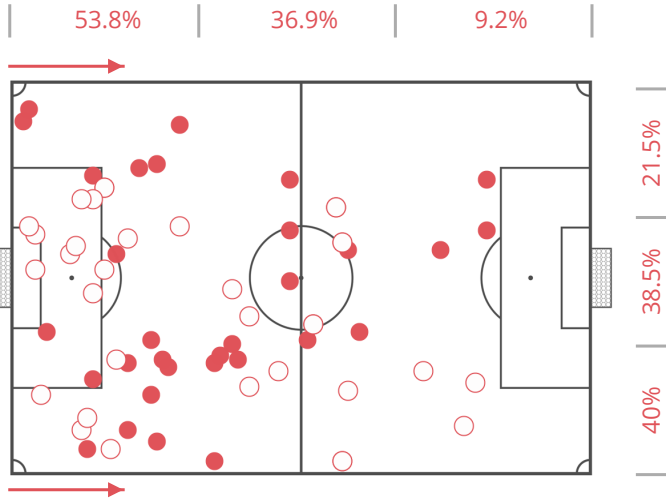
● FIRST HALF

○ SECOND HALF

65

BALL POSSESSION RECOVERY

41



BEST PLAYERS

A. Hermansen (90')	10	E. Amisse (55')	1
M. Julø (90')	10	M. Kisum (44')	2
L. Kooij (90')	9	O. Brondumbo (22')	2
G. Rasmussen (90')	7	Y. Bakiz (35')	3
D. Jakupi (90')	6	N. Lykke (90')	4

WORST PLAYERS

BEST PLAYERS

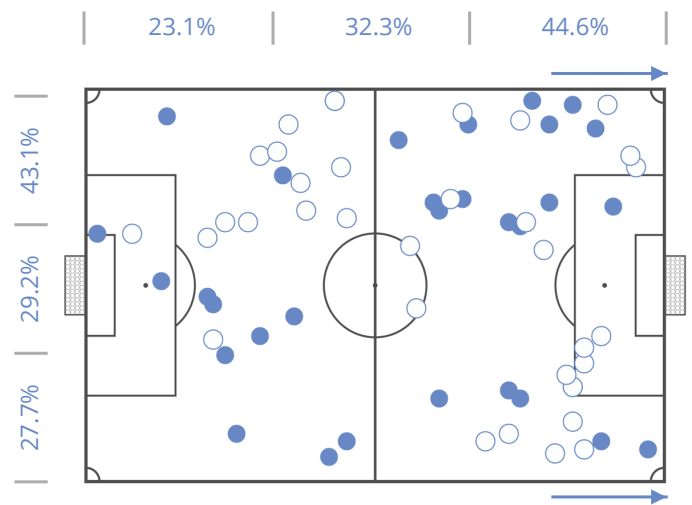
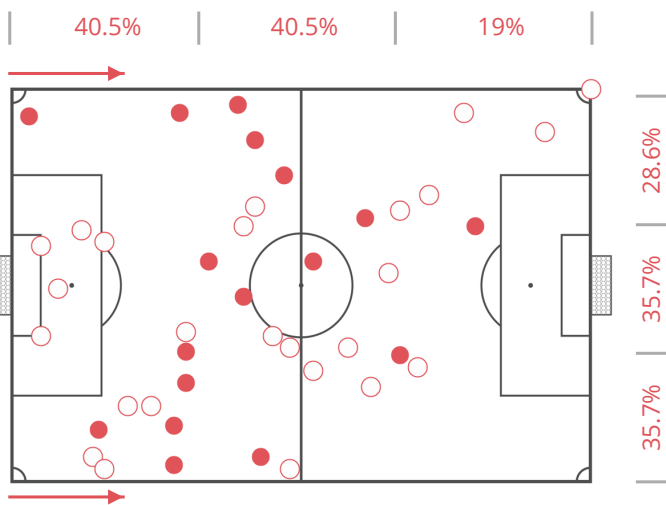
M. De Claville Bertelsen (90')	7	E. Olsen (66')	1
K. Petersen (90')	6	M. Dongsted (44')	1
O. Nielsen (90')	6	A. Al-Badri (24')	1
R. Espersen (90')	6	J. Hansen (9')	1
R. Rasmussen (90')	5	K. Lehm (90')	2

WORST PLAYERS

42

BALL POSSESSION LOSS

65



BEST PLAYERS

M. Kisum (44')	1	N. Lykke (90')	7
A. Hermansen (90')	2	G. Rasmussen (90')	5
S. Christoffersen (68')	2	M. Julø (90')	5
E. Amisse (55')	2	D. Jakupi (90')	4
L. Meinert (46')	2	L. Kooij (90')	4

WORST PLAYERS

BEST PLAYERS

A. Kjerstad (46')	1	R. Rasmussen (90')	11
J. Hansen (9')	1	K. Lehm (90')	10
R. Espersen (90')	2	M. De Claville Bertelsen (90')	9
A. Al-Badri (24')	2	T. Larsen (90')	9
O. Nielsen (90')	3	K. Petersen (90')	7

WORST PLAYERS

TERRITORIAL COVERAGE



ROSKILDE U19

NÆSBY U19



● FIRST HALF

○ SECOND HALF

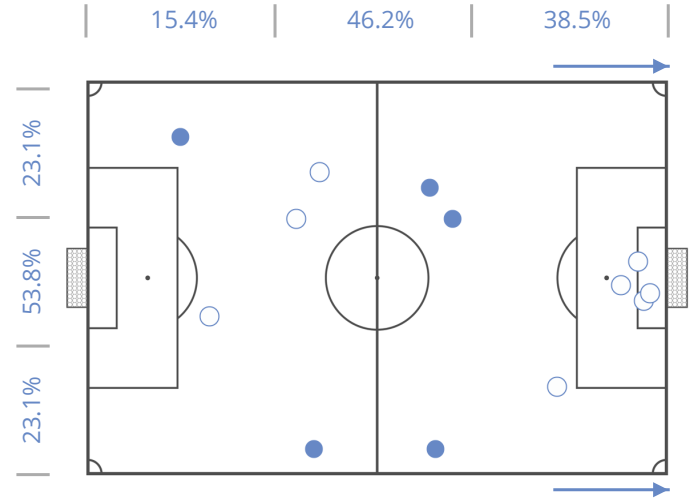
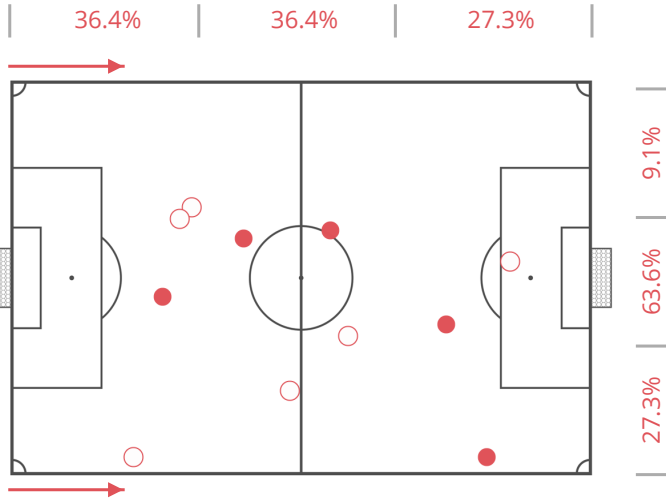
● FIRST HALF

○ SECOND HALF

11

FOULS COMMITTED

13



WORST PLAYERS

M. Julø (90')	4
G. Rasmussen (90')	2
A. Hermansen (90')	1
N. Lykke (90')	1
S. Christoffersen (68')	1

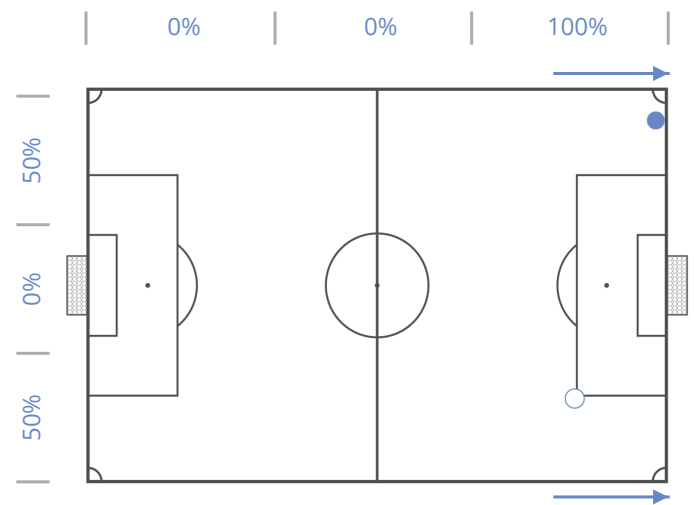
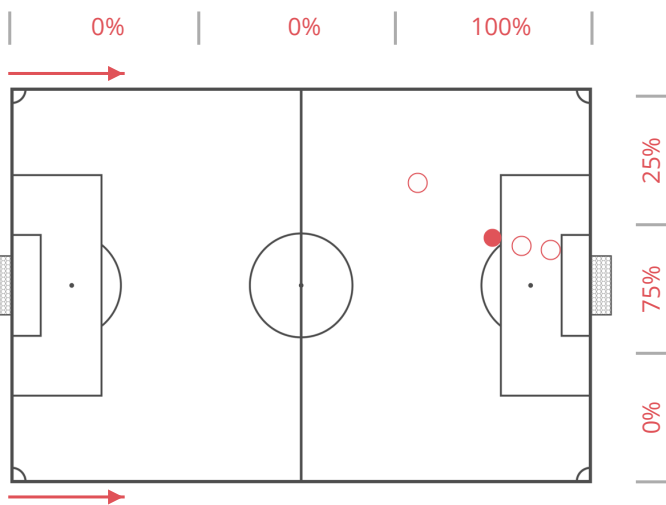
WORST PLAYERS

R. Rasmussen (90')	5
K. Petersen (90')	2
M. Damsbo (81')	2
O. Nielsen (90')	1
R. Espersen (90')	1

4

OFFSIDES

2



WORST PLAYERS

N. Lykke (90')	2
S. Christoffersen (68')	1
E. Amisse (55')	1

WORST PLAYERS

M. De Claville Bertelsen (90')	1
A. Al-Badri (24')	1

TERRITORIAL COVERAGE



ROSKILDE U19

NÆSBY U19



● FIRST HALF

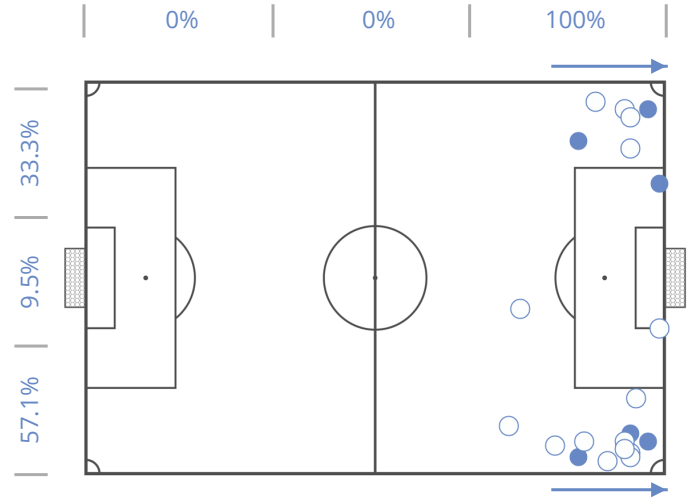
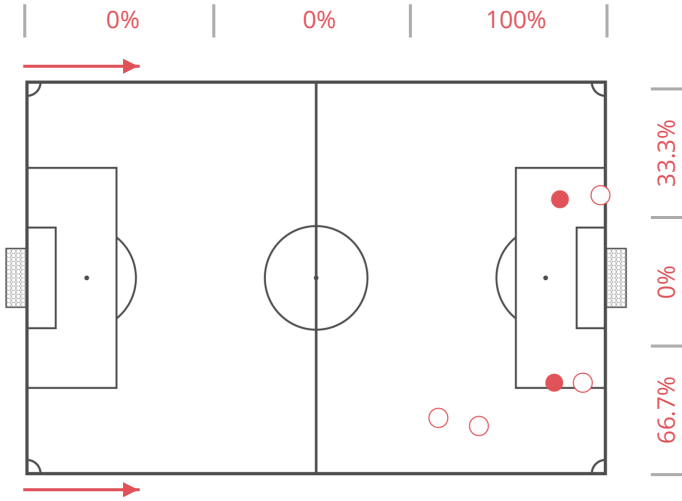
○ SECOND HALF

● FIRST HALF

○ SECOND HALF

6 CROSSES

21



BEST PLAYERS

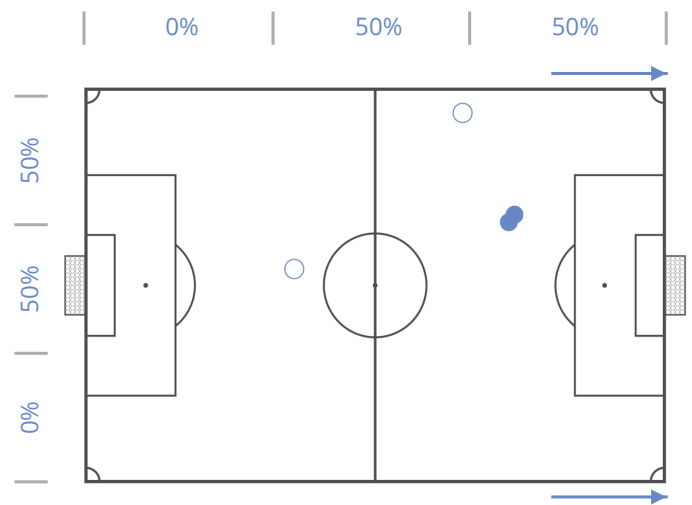
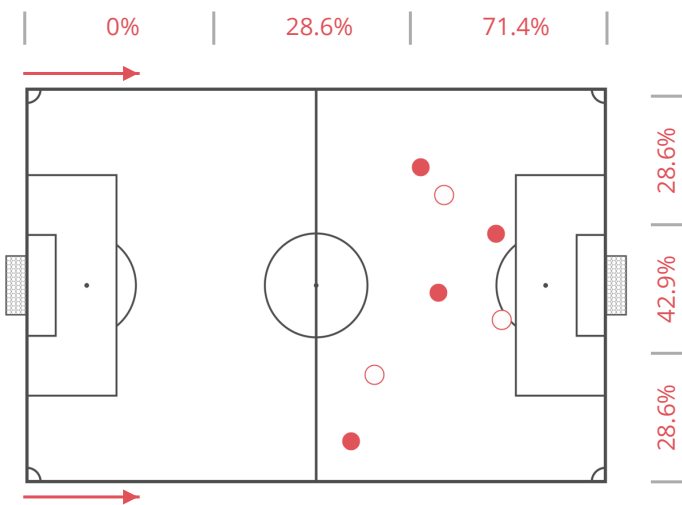
M. Kisum (44')	3
D. Jakupi (90')	1
M. Julø (90')	1
E. Amisse (55')	1

BEST PLAYERS

R. Espersen (90')	5
K. Lehm (90')	4
E. Olsen (66')	3
K. Petersen (90')	2
M. De Claville Bertelsen (90')	2

7 THROUGH PASSES

4



BEST PLAYERS

M. Julø (90')	3
G. Rasmussen (90')	2
S. Christoffersen (68')	1
Y. Bakiz (35')	1

BEST PLAYERS

M. De Claville Bertelsen (90')	3
T. Larsen (90')	1

DUELS

● FIRST HALF

○ SECOND HALF



ROSKILDE U19

NÆSBY U19



● WON

● NEUT.

● LOST

● WON

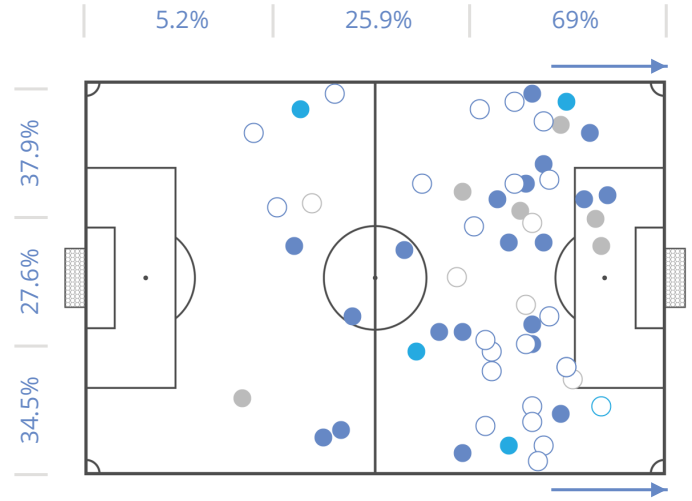
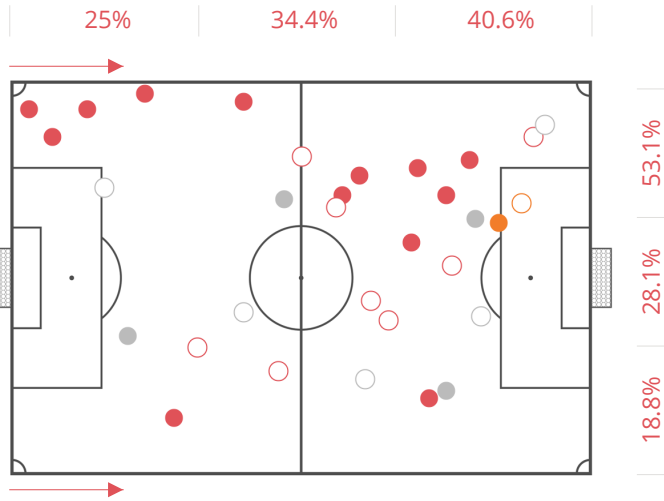
● NEUT.

● LOST

32

1 VS 1 DRIBBLING

58



BEST PLAYERS

	DUELS	WON	NEUT.	LOST
M. Julø (90')	6	2	1	3
G. Rasmussen (90')	4	3	0	1
A. Hermansen (90')	3	2	0	1
N. Lykke (90')	3	1	1	1
N. Nielsen (90')	3	3	0	0

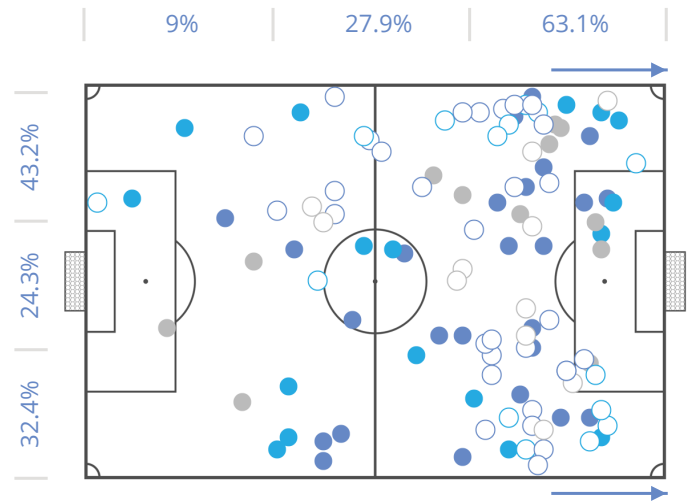
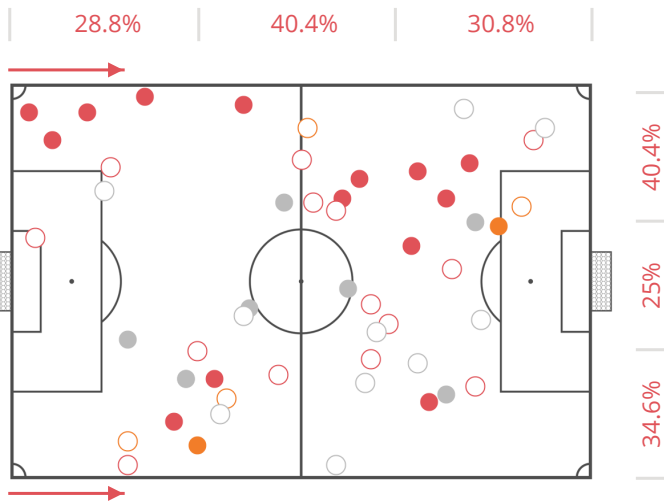
BEST PLAYERS

	DUELS	WON	NEUT.	LOST
M. De Claville Bertelsen (90')	15	11	0	4
K. Petersen (90')	9	7	1	1
O. Nielsen (90')	6	5	0	1
A. Al-Badri (24')	6	4	1	1
M. Dongsted (44')	5	4	0	1

69

ATTACKING DUELS

119



BEST PLAYERS

	DUELS	WON	NEUT.	LOST
M. Julø (90')	9	4	2	3
N. Lykke (90')	8	2	2	4
M. Kisum (44')	7	3	0	4
G. Rasmussen (90')	6	4	0	2
A. Hermansen (90')	4	3	0	1

BEST PLAYERS

	DUELS	WON	NEUT.	LOST
M. De Claville Bertelsen (90')	31	14	10	7
O. Nielsen (90')	15	8	2	5
K. Petersen (90')	12	7	3	2
T. Larsen (90')	10	5	3	2
E. Olsen (66')	8	4	4	0

DUELS

● FIRST HALF

○ SECOND HALF



NÆSBY U19



● WON

● NEUT.

● LOST

● WON

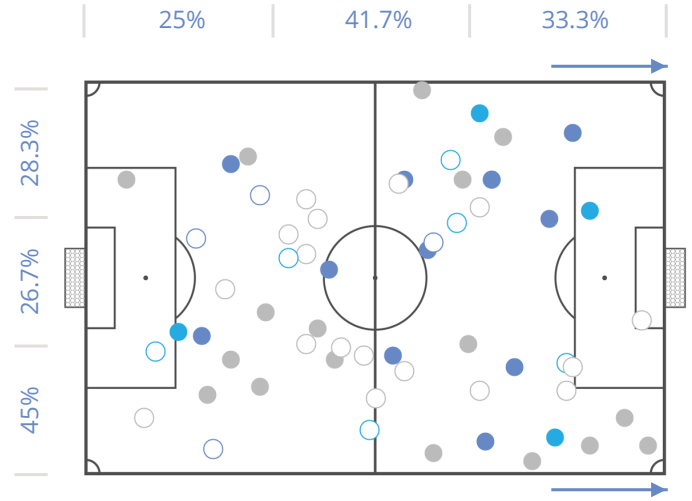
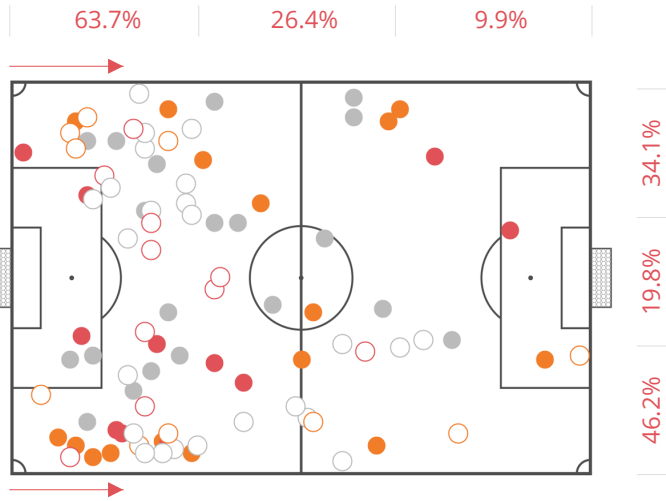
● NEUT.

● LOST

119

DEFENSIVE DUELS

69



BEST PLAYERS

	DUELS	WON	NEUT.	LOST
M. Julø (90')	14	2	4	8
D. Jakupi (90')	13	2	4	7
S. Christoffersen (68')	9	3	2	4
G. Rasmussen (90')	8	2	0	6
L. Kooij (90')	7	5	1	1

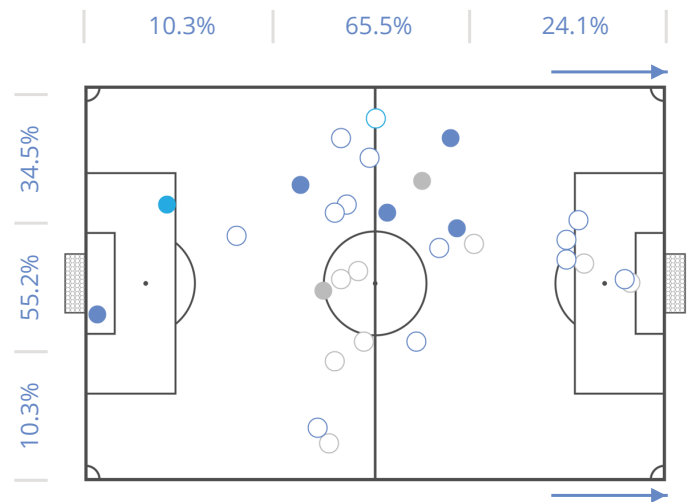
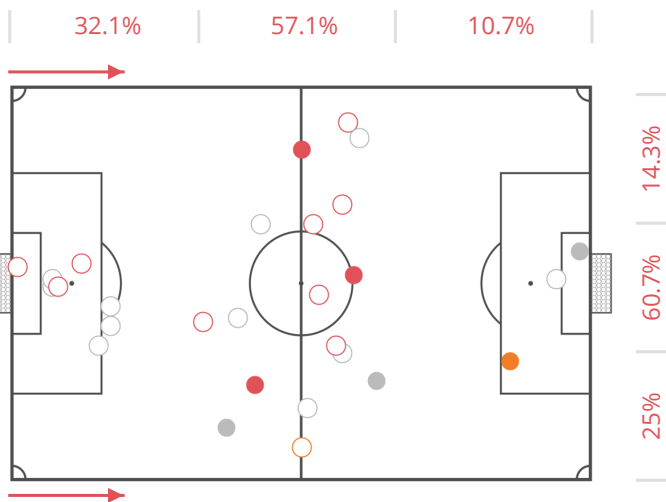
BEST PLAYERS

	DUELS	WON	NEUT.	LOST
O. Nielsen (90')	10	3	2	5
K. Petersen (90')	7	0	2	5
R. Rasmussen (90')	7	2	1	4
K. Lehm (90')	6	1	2	3
R. Espersen (90')	6	2	1	3

36

AERIAL DUELS

36



BEST PLAYERS

	DUELS	WON	NEUT.	LOST
N. Lykke (90')	5	3	0	2
A. Hermansen (90')	3	1	1	1
D. Jakupi (90')	3	1	0	2
L. Kooij (90')	3	2	0	1
N. Nielsen (90')	3	1	0	2

BEST PLAYERS

	DUELS	WON	NEUT.	LOST
R. Rasmussen (90')	7	4	0	3
O. Nielsen (90')	4	2	1	1
K. Petersen (90')	3	2	0	1
K. Lehm (90')	2	1	1	0
R. Espersen (90')	2	2	0	0

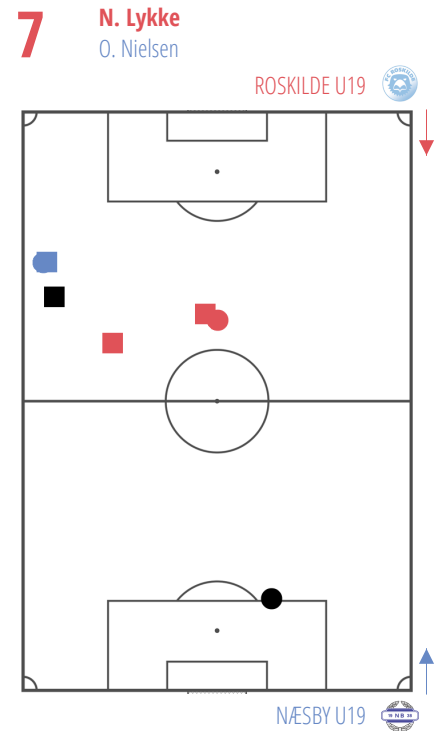
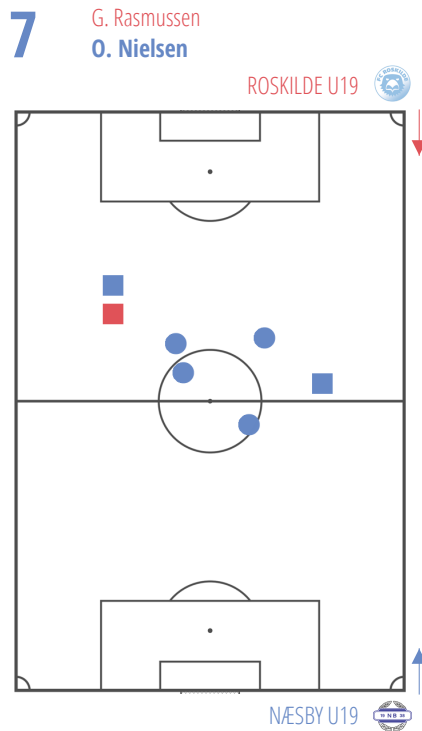
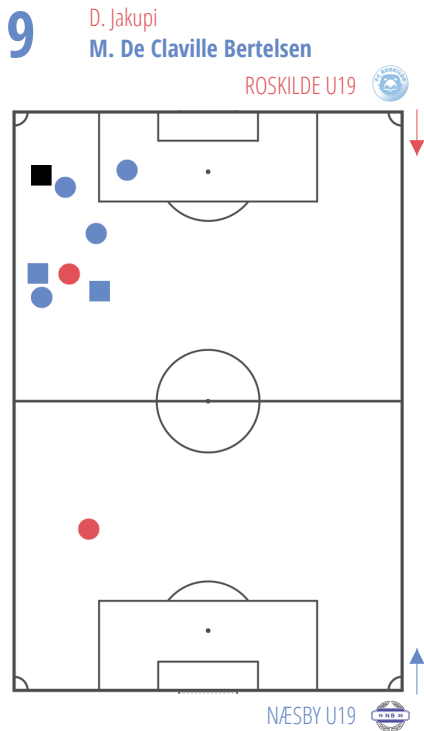
DUELS GRID

NÆSBY U19

ROSKILDE U19

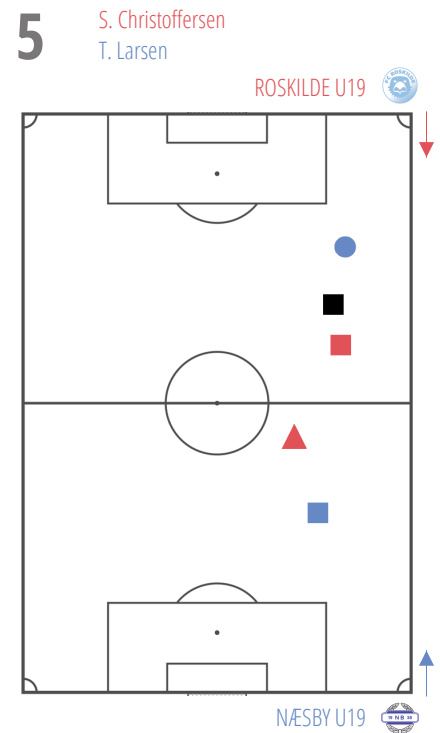
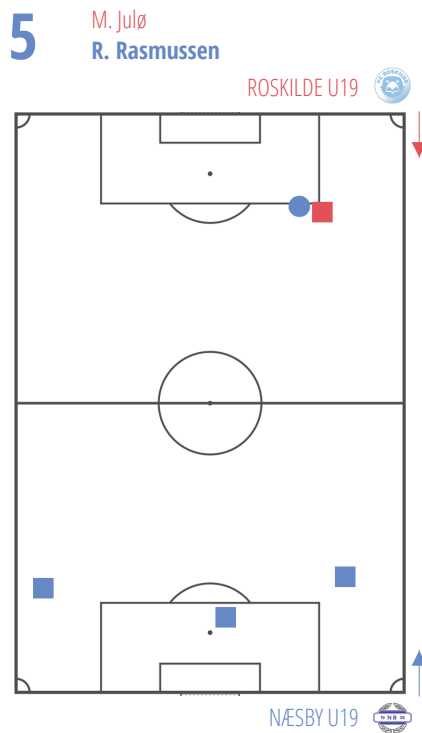
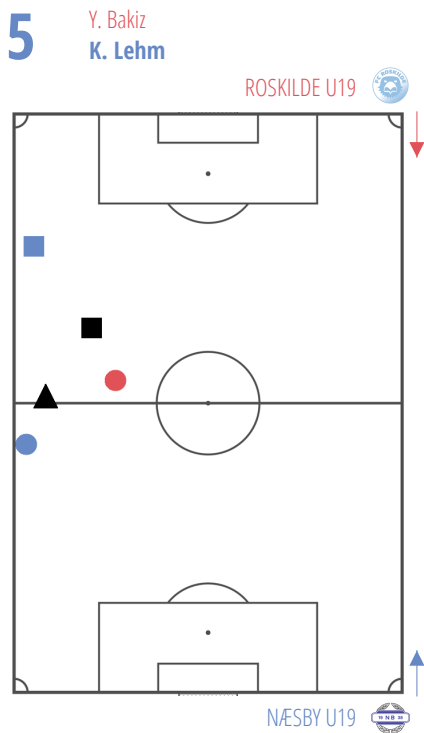
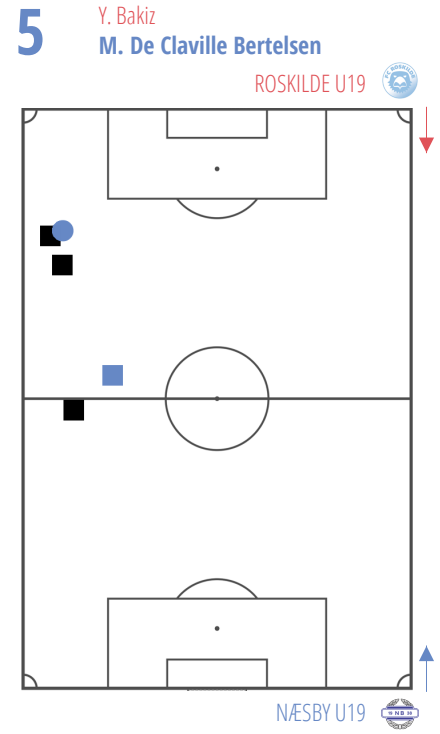
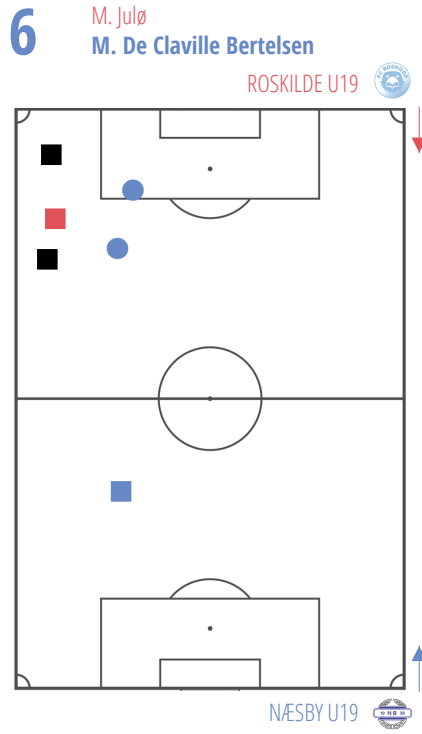
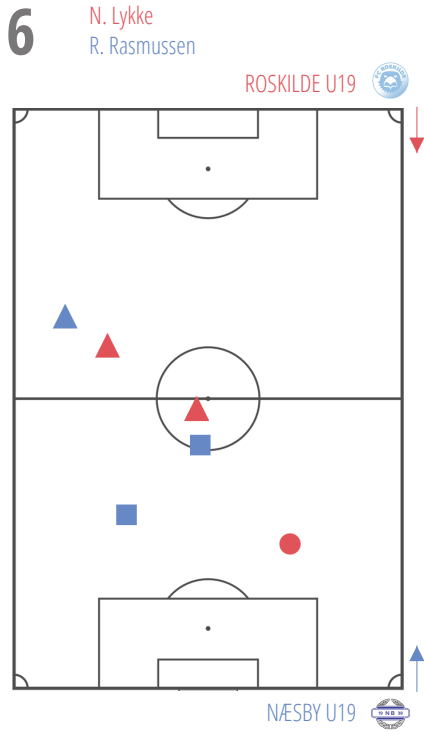
	1. C. Frost-Jensen	13. R. Espersen	6. R. Rasmussen	4. M. Damsbo	2. K. Lehm	3. E. Olsen	12. A. Kjerstad	10. M. De Claville Bertelsen	7. T. Larsen	11. O. Nielsen	8. K. Petersen	5. J. Hansen	9. M. Dongsted	14. A. Al-Badri
1. R. Holmager			2	1										
18. L. Kooij			1				2	4					1	1
13. D. Jakupi			2		1			9		1			2	2
2. N. Nielsen		1	1			4			1				4	1
4. A. Hermansen		1	1				2	1	2	1	1		1	
6. S. Christoffersen		2				2		2	5	2	1			
8. G. Rasmussen				1	1		1	1	1	7	3		2	
17. L. Meinert		1	2	1					1	1	3			
16. M. Julø		4	5		3	1		6	1	4	2		2	
11. E. Amisse		3		1		4			1		1			
21. N. Lykke	1	1	6	4					2	7	2			
12. Y. Bakiz					5			5			1	1		
3. O. Brondumbo			1						1	2			1	4
7. M. Kisum				2					1	1	3			

△ AIR CHALL.
 GROUND CHALL.
 ○ DRIBBLES
● WON BY ROSKILDE U19
 ● WON BY NÆSBY U19
 ● NEUTRAL DUELS

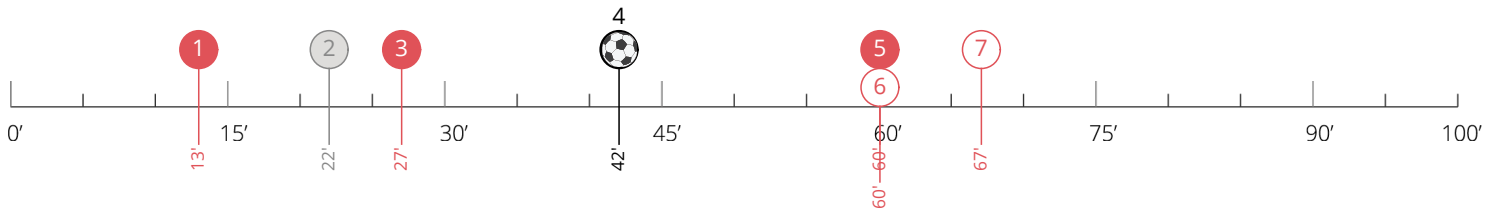


DUELS GRID

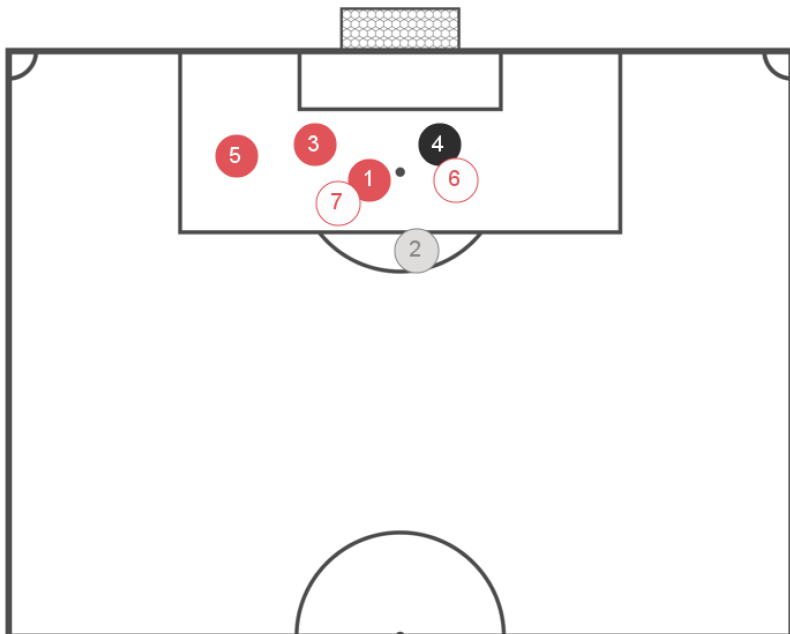
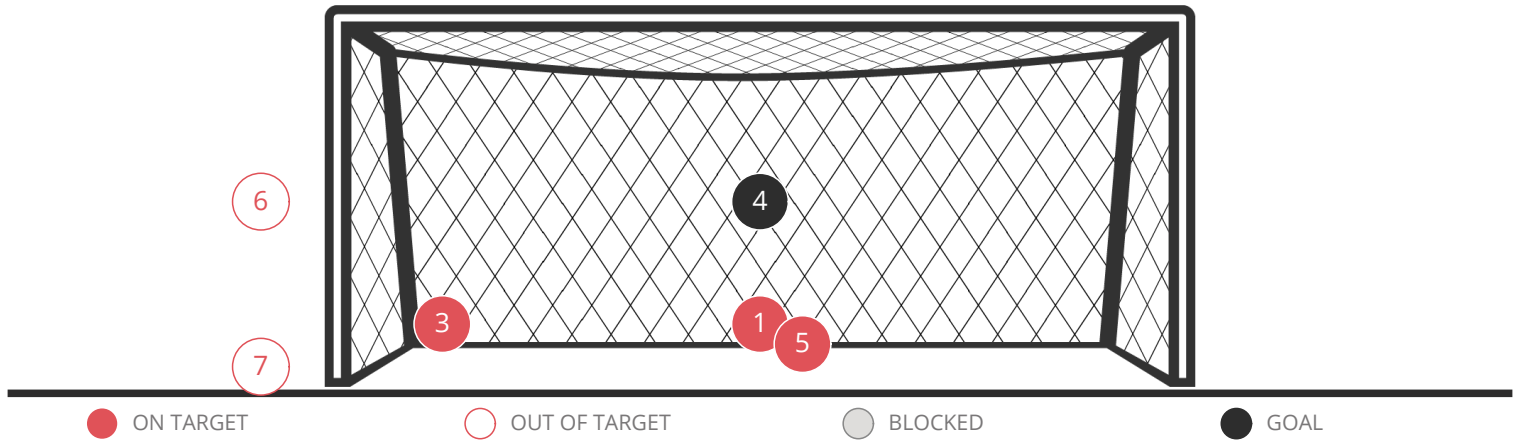
△ AIR CHALL. □ GROUND CHALL. ○ DRIBBLES
● WON BY ROSKILDE U19 ● WON BY NÆSBY U19 ● NEUTRAL DUELS



ROSKILDE U19: GOALS AND STRIKES



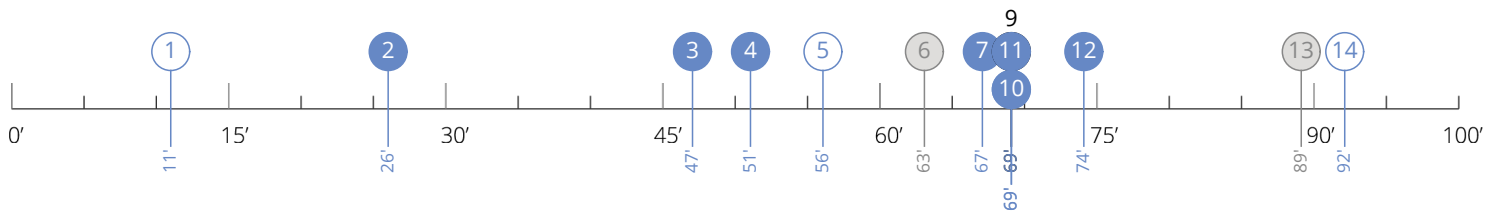
7 SHOTS 4 ON TARGET 1 BLOCKED 2 GOALS



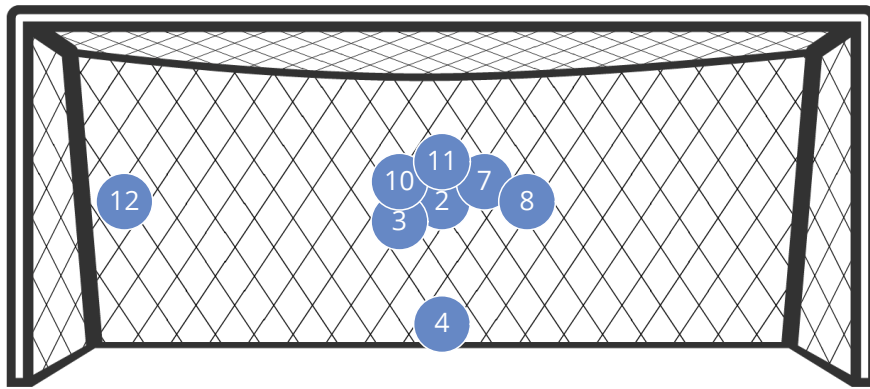
PLAYERS

	PLAYERS	FOOT
1	N. Lykke	Heading
2	G. Rasmussen	Right
3	L. Meinert	Left
4	N. Lykke	Left
5	M. Julø	Left
6	Y. Bakiz	Heading
7	M. Kisum	Left

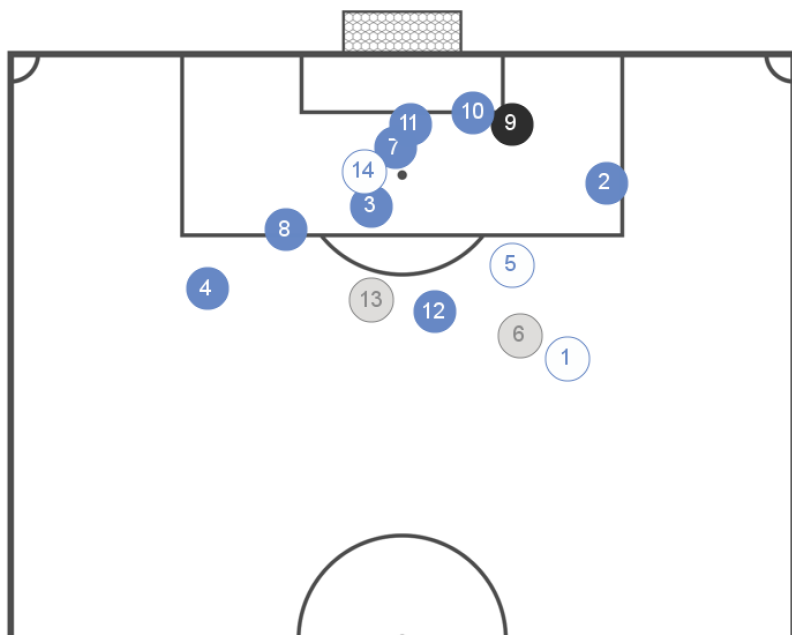
NÆSBY U19: GOALS AND STRIKES



14 SHOTS 8 ON TARGET 3 BLOCKED 1 GOALS



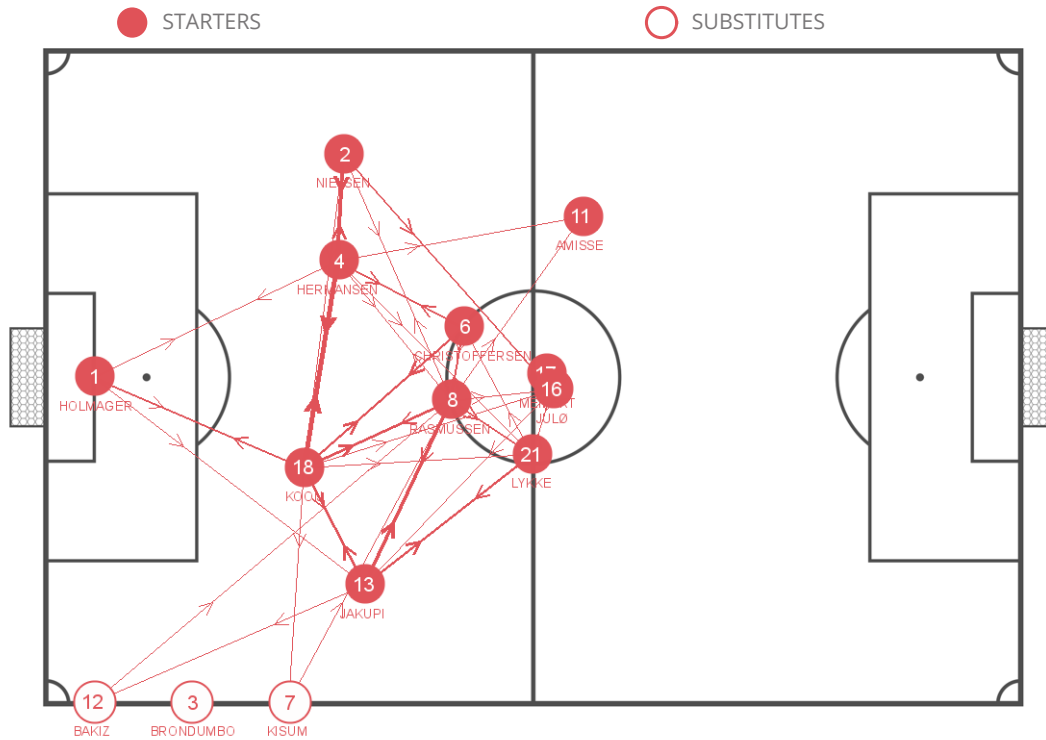
● ON TARGET ○ OUT OF TARGET ● BLOCKED ● GOAL



PLAYERS

PLAYERS	FOOT
1 T. Larsen	Left
2 E. Olsen	Right
3 M. Dongsted	Right
4 M. De Claville Bertelsen	Right
5 K. Petersen	Right
6 R. Espersen	Right
7 M. Dongsted	Heading
8 M. Dongsted	Heading
9 R. Rasmussen	Right
10 R. Rasmussen	Right
11 R. Rasmussen	Left
12 T. Larsen	Left
13 A. Al-Badri	Right
14 K. Lehm	Left

ROSKILDE U19: PASSES



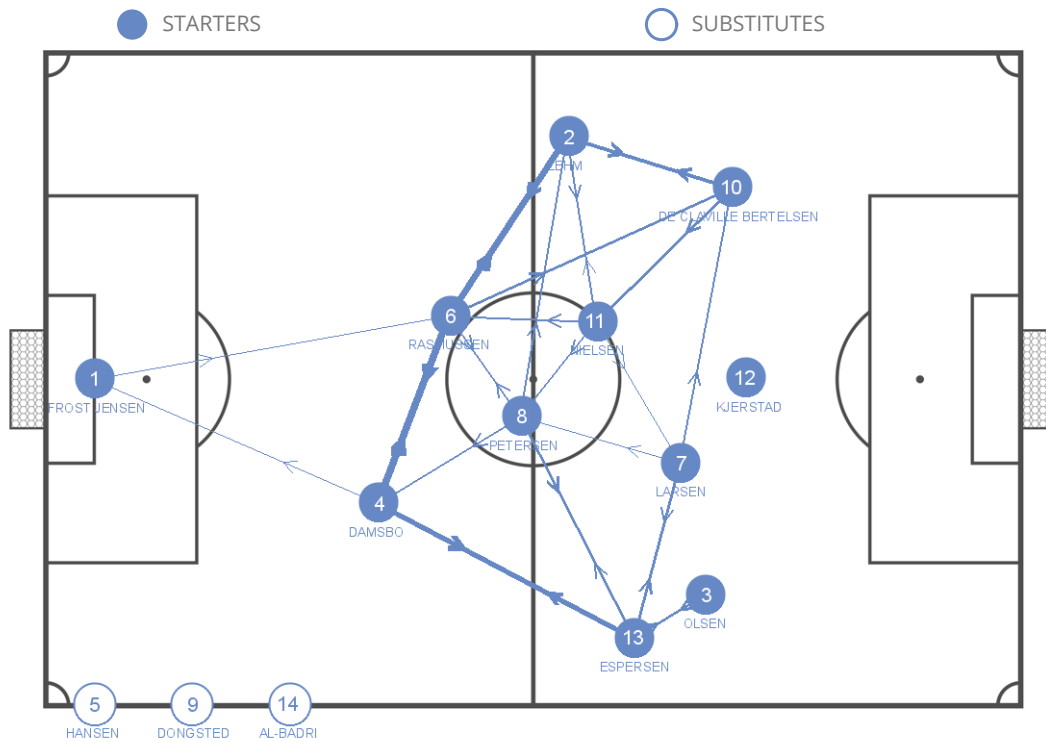
	1. R. Holmager	18. L. Kooij	13. D. Jakupi	2. N. Nielsen	4. A. Hermansen	6. S. Christoffersen	8. G. Rasmussen	17. L. Meinert	16. M. Julø	11. E. Amisse	21. N. Lykke	12. Y. Bakiz	3. O. Brondumbo	7. M. Kisum
1. R. Holmager	4	3	1	4		2	1 (1)	1 (1)	1 (1)	1 (1)	2 (2)	1		
18. L. Kooij	5	5	2 (1)	13	8	9	2	4		3	1	1	4 (1)	
13. D. Jakupi	2	8			2	10	1			8 (2)	3 (1)		2	
2. N. Nielsen	1	4 (1)			11	1	3	1	5 (2)	1				
4. A. Hermansen	4	13		9		5	4	2 (1)	1 (1)	3	3	1		
6. S. Christoffersen	1	8	2	2 (1)	6		4	1		2	2			
8. G. Rasmussen	1	6	5	4 (1)	4	6 (1)		2 (1)	4	4 (1)	5 (1)	2	1	
17. L. Meinert		2	2			2	1				1 (1)			
16. M. Julø		2	3	2 (1)		1	2	3			4 (1)			
11. E. Amisse				1	2	2	2		1		1			
21. N. Lykke			7 (1)	1		4	2	1	3			2		
12. Y. Bakiz		1	2			1	3		2 (1)		2		2	
3. O. Brondumbo		1	2		1		1				1		1 (1)	
7. M. Kisum			1				3		2		1	1		

PASSES RECEIVED BY THE PLAYER

PASSES MADE BY THE PLAYER

(*) HIGH PASSES

NÆSBY U19: PASSES



	1. C. Frost Jensen	13. R. Espersen	6. R. Rasmussen	4. M. Damsbo	2. K. Lehmann	3. E. Olsen	12. A. Kjerstad	10. M. De Claville Bertelsen	7. T. Larsen	11. O. Nielsen	8. K. Petersen	5. J. Hansen	9. M. Dongsted	14. A. Al-Badri
1. C. Frost Jensen	4		2	3	1 (1)						1		1	
13. R. Espersen		2	10	8		1	8	3	7			2	1	
6. R. Rasmussen		2	17	18		1	8 (4)	1 (1)	3	6				
4. M. Damsbo	4	15	20	1	2 (1)	1 (1)			1			1		
2. K. Lehmann	1		13	1 (1)		1 (1)	12	2 (2)	7	1		2 (1)		
3. E. Olsen		8					1	2	1	3		1		
12. A. Kjerstad							2	1						
10. M. De Claville Bertelsen		2	3	3 (1)	12 (1)	1		2	8	2		2		
7. T. Larsen		5	1		3	2 (1)	1	7 (4)		2	4	1	1	
11. O. Nielsen		1 (1)	5	3 (2)	4	3 (1)	1	4 (1)		6			1 (1)	
8. K. Petersen		8	7 (1)	6	5	2	1 (1)	2	2	3		1 (1)	2 (1)	
5. J. Hansen			1					1						
9. M. Dongsted		3	1	1					1	2	2		2 (1)	
14. A. Al-Badri			1 (1)						1			1		

PASSES RECEIVED BY THE PLAYER

PASSES MADE BY THE PLAYER

(*) HIGH PASSES

ROSKILDE U19: PLAYER EVENTS

		MINUTES PLAYED	GOALS / GOALS ON PENALTY	ASSISTS	TOUCHES	SHOTS / ON TARGET	FOULS COMM. / CONCEDED	YELLOW CARDS / RED CARDS	OFFSIDES	FREE K. SHOTS / ON TARGET	FREE K. CROSS / ACCURATE	CORNERS / ACCURATE	THROW INS / ACCURATE
1	R. Holmager	90	0/0	0	29	0/0	0/2	0/0	0	0/0	0/0	0/0	0/0
18	L. Kooij	90	0/0	0	65	0/0	0/0	0/0	0	0/0	0/0	0/0	0/0
13	D. Jakupi	90	0/0	0	49	0/0	0/0	0/0	0	0/0	0/0	0/0	6/6
2	N. Nielsen	90	0/0	0	42	0/0	0/1	0/0	0	0/0	0/0	0/0	5/5
4	A. Hermansen	90	0/0	0	62	0/0	1/1	0/0	0	0/0	0/0	0/0	0/0
6	S. Christoffersen	68	0/0	0	38	0/0	1/0	1/0	1	0/0	0/0	0/0	0/0
8	G. Rasmussen	90	0/0	0	56	1/0	2/1	0/0	0	0/0	0/0	0/0	0/0
17	L. Meinert	46	0/0	0	13	1/1	1/1	0/0	0	0/0	0/0	0/0	0/0
16	M. Julø	90	0/0	0	31	1/1	4/1	1/0	0	0/0	3/1	1/1	0/0
11	E. Amisse	55	0/0	0	15	0/0	0/1	0/0	1	0/0	0/0	3/1	0/0
21	N. Lykke	90	1/0	0	35	2/2	1/1	0/0	2	0/0	0/0	0/0	0/0
12	Y. Bakiz	35	0/0	0	22	1/0	1/1	0/0	0	0/0	0/0	0/0	0/0
3	O. Brondumbo	22	0/0	0	12	0/0	0/1	0/0	0	0/0	0/0	0/0	0/0
7	M. Kisum	44	1/0	0	11	1/0	0/2	0/0	0	1/1	0/0	0/0	1/1

		DUELS / WON	GROUND CHALL. / WON	AIR CHALL. / WON	ATTACKING CHALL.	DEFENDING CHALL.	DRIBBLES	TACKLES	DEFENDING 1V1	RECOVERED IN OPP. HALF	LOSSES IN OPP. HALF
1	R. Holmager	4/3	2/1	2/2	0	0	0	0	0	0	0
18	L. Kooij	11/7	8/5	3/2	1	7	1	1	7	2	0
13	D. Jakupi	20/5	17/4	3/1	3	13	2	0	6	0	0
2	N. Nielsen	13/6	10/5	3/1	3	6	3	0	2	0	0
4	A. Hermansen	13/6	10/5	3/1	4	4	3	0	0	0	0
6	S. Christoffersen	17/8	15/7	2/1	3	9	3	1	6	1	1
8	G. Rasmussen	18/6	17/6	1/0	6	8	4	0	6	3	1
17	L. Meinert	12/3	10/1	2/2	1	5	0	0	2	0	2
16	M. Julø	31/7	30/7	1/0	9	14	6	2	7	5	4
11	E. Amisse	11/5	11/5	0/0	3	4	3	0	1	1	1
21	N. Lykke	26/11	21/8	5/3	8	6	3	1	3	2	3
12	Y. Bakiz	13/2	12/2	1/0	4	6	2	0	2	2	0
3	O. Brondumbo	11/3	8/2	3/1	0	7	0	0	5	0	1
7	M. Kisum	10/4	9/4	1/0	7	2	2	0	1	2	1

		PASSES / ACCURATE	% ACCURATE	LONG PASSES / ACCURATE	THROUGH PASSES / ACCURATE	IN THE BOX / ACCURATE	CROSSES / ACCURATE	CROSS FROM BYLINE	CROSS HIGH	CROSS LOW	CROSS BLOCKED
1	R. Holmager	26/21	81	11/6	0/0	0/0	0/0	0	0	0	0
18	L. Kooij	61/57	94	3/2	0/0	0/0	0/0	0	0	0	0
13	D. Jakupi	42/37	89	6/3	0/0	1/0	1/0	1	0	1	0
2	N. Nielsen	33/27	82	5/3	0/0	0/0	0/0	0	0	0	0
4	A. Hermansen	49/46	94	4/3	0/0	1/1	0/0	0	0	0	0
6	S. Christoffersen	34/30	89	2/1	1/0	0/0	0/0	0	0	0	0
8	G. Rasmussen	51/42	83	8/4	2/1	0/0	0/0	0	0	0	0
17	L. Meinert	11/8	73	1/1	0/0	0/0	0/0	0	0	0	0
16	M. Julø	28/18	65	5/2	3/0	1/0	1/0	1	0	0	1
11	E. Amisse	12/9	75	1/0	0/0	1/0	1/0	1	0	0	1
21	N. Lykke	30/23	77	3/2	0/0	1/1	0/0	0	0	0	0
12	Y. Bakiz	16/13	82	2/1	1/1	1/1	0/0	0	0	0	0
3	O. Brondumbo	10/7	70	1/1	0/0	0/0	0/0	0	0	0	0
7	M. Kisum	11/8	73	0/0	0/0	1/0	3/1	1	2	1	0

NÆSBY U19: PLAYER EVENTS

		MINUTES PLAYED	GOALS / GOALS ON PENALTY	ASSISTS	TOUCHES	SHOTS / ON TARGET	FOULS COMM. / CONCEDED	YELLOW CARDS / RED CARDS	OFFSIDES	FREE K. SHOTS / ON TARGET	FREE K. CROSS / ACCURATE	CORNERS / ACCURATE	THROW INS / ACCURATE
1	C. Frost Jensen	90	0/0	0	13	0/0	0/0	0/0	0	0/0	0/0	0/0	0/0
13	R. Espersen	90	0/0	0	51	1/0	1/0	0/0	0	0/0	0/0	0/0	12/11
6	R. Rasmussen	90	1/0	0	71	3/2	5/4	0/0	0	0/0	0/0	0/0	0/0
4	M. Damsbo	81	0/0	0	56	0/0	2/0	0/0	0	0/0	0/0	0/0	0/0
2	K. Lehm	90	0/0	0	56	1/0	0/1	0/0	0	0/0	0/0	0/0	12/12
3	E. Olsen	66	0/0	0	22	1/1	1/1	0/0	0	0/0	0/0	0/0	1/1
12	A. Kjerstad	46	0/0	0	4	0/0	0/0	0/0	0	0/0	0/0	0/0	0/0
10	M. De Claville Bertelsen	90	0/0	0	49	1/1	0/1	0/0	1	1/0	3/1	3/3	0/0
7	T. Larsen	90	0/0	0	39	2/1	0/1	0/0	0	0/0	2/2	4/1	0/0
11	O. Nielsen	90	0/0	0	37	0/0	1/2	0/0	0	0/0	0/0	0/0	0/0
8	K. Petersen	90	0/0	0	54	1/0	2/0	1/0	0	0/0	0/0	0/0	0/0
5	J. Hansen	9	0/0	0	3	0/0	0/0	0/0	0	0/0	0/0	0/0	0/0
9	M. Dongsted	44	0/0	0	18	3/3	1/1	0/0	0	0/0	0/0	0/0	0/0
14	A. Al-Badri	24	0/0	0	6	1/0	0/0	0/0	1	0/0	0/0	0/0	0/0

		DUELS / WON	GROUND CHALL. / WON	AIR CHALL. / WON	ATTACKING CHALL.	DEFENDING CHALL.	DRIBBLES	TACKLES	DEFENDING 1V1	RECOVERED IN OPP. HALF	LOSSES IN OPP. HALF
1	C. Frost Jensen	1/1	1/1	0/0	0	0	0	0	0	0	0
13	R. Espersen	17/8	15/6	2/2	6	6	4	1	4	4	2
6	R. Rasmussen	25/12	18/8	7/4	5	7	1	3	3	0	7
4	M. Damsbo	10/6	8/6	2/0	0	4	0	0	2	0	0
2	K. Lehm	14/6	12/5	2/1	6	6	4	1	3	2	3
3	E. Olsen	14/5	13/5	1/0	8	4	3	0	3	1	3
12	A. Kjerstad	7/1	6/0	1/1	3	2	2	0	1	0	1
10	M. De Claville Bertelsen	41/21	41/21	0/0	31	5	15	0	5	7	9
7	T. Larsen	22/10	21/10	1/0	10	6	3	1	5	2	6
11	O. Nielsen	32/15	28/13	4/2	15	10	6	1	7	5	1
8	K. Petersen	27/11	24/9	3/2	12	7	9	0	4	3	2
5	J. Hansen	3/3	1/1	2/2	0	0	0	0	0	1	0
9	M. Dongsted	14/6	12/4	2/2	8	3	5	0	1	0	3
14	A. Al-Badri	9/5	7/4	2/1	7	0	6	0	0	0	2

		PASSES / ACCURATE	% ACCURATE	LONG PASSES / ACCURATE	THROUGH PASSES / ACCURATE	IN THE BOX / ACCURATE	CROSSES / ACCURATE	CROSS FROM BYLINE	CROSS HIGH	CROSS LOW	CROSS BLOCKED
1	C. Frost Jensen	13/12	93	2/1	0/0	0/0	0/0	0	0	0	0
13	R. Espersen	50/43	86	1/1	0/0	0/0	5/0	3	3	0	2
6	R. Rasmussen	67/57	86	11/5	0/0	1/1	1/0	0	1	0	0
4	M. Damsbo	50/44	88	4/1	0/0	0/0	0/0	0	0	0	0
2	K. Lehm	55/40	73	10/5	0/0	1/0	4/0	3	4	0	0
3	E. Olsen	21/16	77	1/0	0/0	0/0	3/2	2	2	1	0
12	A. Kjerstad	3/3	100	0/0	0/0	1/1	0/0	0	0	0	0
10	M. De Claville Bertelsen	47/36	77	4/2	3/1	1/1	2/1	1	2	0	0
7	T. Larsen	36/27	75	6/5	1/1	1/1	1/0	1	0	1	0
11	O. Nielsen	35/31	89	8/6	0/0	0/0	1/1	0	1	0	0
8	K. Petersen	47/41	88	7/5	0/0	1/0	2/1	1	1	0	1
5	J. Hansen	3/2	67	1/0	0/0	0/0	0/0	0	0	0	0
9	M. Dongsted	16/12	75	1/1	0/0	1/1	1/0	1	0	1	0
14	A. Al-Badri	6/3	50	1/1	0/0	1/0	1/0	1	1	0	0

MATCH REPORT GUIDE

SECTION 1

AVERAGE POSITIONS

Players position is calculated on an average detected point which takes into consideration every kind of action, including those with no ball possession.

White-filled circles are substitutes indicators.

Players whose jersey number is not provided are identified with an increasing negative number.

SECTION 2

GENERALS**Average position**

It shows the barycentre of the team, considering the average place of its actions.

CONSTRUCTION**Actions started by goalkeeper**

It considers all the actions started by the goalkeeper. It will be considered as a single one even if inside the same action he is involved more than once before the ball crosses the halfway line.

Long pass

Number of throws beyond the halfway line.

Low

Number of throws to a fellow teammate inside his half of the field.

Right

Number of actions crossing the halfway line in the right side.

Left

Number of actions crossing the halfway line in the left side.

Center

Number of actions crossing the halfway line in the central area.

Failed

Number of actions stopped before crossing the halfway line.

ATTACKING PLAY**Actions finalization**

It shows team offensive dangerousness and the way it is carried out.

Shot from outside of penalty area

Number of team shots from outside the penalty area.

Crosses

It shows how many finalizations are completed straight after a cross from the flanks.

Build-Up play

It shows how many finalizations are completed straight after a build-up play.

Long ball

It shows how many finalizations are completed straight after a long ball.

DEFENSIVE**Final Third Entries**

Number of times the opponent team plays the ball between the halfway line and the penalty area.

Fouls near the box

Number of fouls committed by the team nearby its penalty areas

SECTION 3

TERRITORIAL COVERAGE**Ball possession recovery**

It only takes into consideration the actual number of ball possession recoveries, even if temporary. Recoveries caused by opponents mistakes are not considered (i.e. ball kicked out of the pitch by the opponent).

SECTION 4

DUELS**Attacking duels**

Number of duels carried out when the team has ball possession.

Defensive duels

Number of duels carried out when the opponent team has ball possession.

SECTION 7

PASSES

Players position is calculated on an average detected point based on the position occupied, considering every kind of action, including those with no ball possession.

Lines connecting players show the number of passes. The thicker is the line, the higher is the number of passes between each other.